

G
Accessories

Accessories



Accessories

Ball Valves / Plug Valves



- Forged brass, general purpose, industrial ball valves
- Stainless steel, general purpose, industrial ball valves
- One piece extruded brass body plug valves

G3

Accessories – continued

Miscellaneous Accessories



- Tank valves & air chucks
- Mufflers & silencers
- Relief valves
- Quick exhaust / shuttle valves
- Pressure switches
- Blow guns
- Ports from M5 through 3/4 inch

G10

Hose & Fittings



- 801 General purpose hose
- Push-on hose barb fittings

G4

Quick Couplings



- SensoControl® (Product Highlight Only)
- Industrial interchange nipples
–1/4" to 3/4" body size
- Sleeveomatic couplers
–1/4" to 1/2" body size
- Safromatic couplers
–1/4" to 3/4" body size
- Economatic quick connect couplings
–1/4" body size

G14

Integrated Fittings



- Flow control regulators
- Inline check valves
- Blocking valves
- Threshold sensors

G5

Tubing & Fittings



- Polyethylene tubing
- Nylon tubing
- Polyurethane tubing
- Push-to-connect, Prestolok composite fittings
- Push-to-connect, Prestolok metal fittings
- Pipe fittings

G18

G

Pictorial Index

Parker Pneumatic

Accessories

Ball and Plug Valves, Drain Cocks

Female-Female Pipe Ends XV500P



Pipe thread	Flow dia.	Part number
1/4	.375	XV500P-4
3/8	.375	XV500P-6
1/2*	.500	XV500P-8
3/4**	.685	XV500P-12
1**	.875	XV500P-16

Female Pipe Ends, Lever Handle, Mini Ball Valve MV200



Pipe thread	Flow dia.	Part number
1/8	.31	MV200-2
1/4	.31	MV200-4
3/8	.31	MV200-6
1/2	.39	MV200-8

Male-Female Pipe Ends, Compact Handle, Mini Ball Valve MV608



Pipe thread	Flow dia.	Part number
1/8	.20	MV608-2
1/4	.31	MV608-4
3/8	.31	MV608-6
1/2	.39	MV608-8

Female Pipe Ends, Compact Handle, Mini Ball Valve MV609



Pipe thread	Flow dia.	Part number
1/8	.24	MV609-2
1/4	.31	MV609-4
3/8	.31	MV609-6
1/2	.39	MV609-8
3/8x1/4	.31	MV609-6-4

Female Pipe Ends, Panel Mount XV502SS



Pipe thread	Flow dia.	Part number
1/4	.380	XV502SS-4
3/8	.380	XV502SS-6
1/2	.500	XV502SS-8
3/4	.790	XV502SS-12
1	1.000	XV502SS-16
1-1/4	1.250	XV502SS-20
1-1/2	1.500	XV502SS-24
2	2.000	XV502SS-32

Most popular.

Male Pipe to Male Pipe Plug Valve PV607



Pipe thread	Flow dia.	Part number
1/8	.200	PV607-2
1/4	.200	PV607-4

Female Pipe to Male Pipe Plug Valve PV608



Pipe thread	Flow dia.	Part number
1/8	.200	PV608-2
1/4	.200	PV608-4

Female Pipe to Female Pipe Plug Valve PV609



Pipe thread	Flow dia.	Part number
1/8	.200	PV609-2
1/4	.200	PV609-4

Internal Seal Drain Cock DC602

Temperature Range: -65° to 250°F



Pipe thread	Part number
1/8	DC602-2
1/4	DC602-4

External Seal Drain Cock DC604

Temperature Range: -25° to 250°F



Pipe thread	Part number
1/8	DC604-2*
1/4	DC604-4
3/8	DC604-6*

* When assembled handle wings are down facing

G

Accessories

Ball / Plug Valves

Hose & Fittings

Integrated Fittings

Misc. Accessories

Quick Couplings

Tubing & Fittings



Parker Pneumatic

Hose Barb Fittings & Tubing

Hose & Fittings

801 Push-Lok Plus General Purpose Hose

Hose I.D. Inch	Hose O.D. Inch	Reel length	General part number*	Continuous part number
1/4	0.50	600 feet	801-4-***-RL	801-4-***-7200
3/8	0.63	450 feet	801-6-***-RL	801-6-***-5400
1/2	0.78	300 feet	801-8-***-RL	801-8-***-3600
5/8	0.91	250 feet	801-10-***-RL	801-10-***-3000
3/4	1.03	200 feet	801-12-***-RL	801-12-***-2400
1	1.28	200 feet	801-16-***-RL	801-16-***-2400



*** Available Colors

GRA = gray
 BLU = blue
 RED = red
 GRN = green
 YEL = yellow
 BLK = black

* General reels have no more than 3 lengths per reel, each no less than 20 feet.

30182 Push-on Hose Barb to Male Pipe

Thread (in)	Hose size (in)	Part number
1/8 x 27	1/4	30182-2-4B
1/4 x 18	1/4	30182-4-4B
1/4 x 18	3/8	30182-4-6B
3/8 x 18	3/8	30182-6-6B
1/2 x 14	3/8	30182-8-6B
3/8 x 18	1/2	30182-6-8B
1/2 x 14	1/2	30182-8-8B
1/2 x 14	5/8	30182-8-10B
3/4 x 14	1/2	30182-12-8B
3/4 x 14	3/4	30182-12-12B



30282 Push-on Hose Barb to Female Pipe

Thread (in)	Hose size (in)	Part number
1/4 x 18	1/4	30282-4-4B
3/8 x 18	3/8	30282-6-6B
1/2 x 14	1/2	30282-8-8B



31382 Push-on Hose Barb to Male Pipe Swivel

Thread (in)	Hose size (in)	Part number
1/4 x 18	1/4	31382-4-4
3/8 x 18	3/8	31382-6-6
1/2 x 14	1/2	31382-8-8*



* Steel

38282 Push-on Hose Barb Union

Hose size (in)	Part number
1/4	38282-4-4B
3/8	38282-6-6B
1/2	38282-8-8B



Most popular.

30482 Push-on Hose Barb to Male SAE 45°

Thread (in)	Hose size (in)	Part number
7/16 x 20	1/4	30482-4-4B
1/2 x 20	1/4	30482-5-4B
5/8 x 18	3/8	30482-6-6B
3/4 x 16	1/2	30482-8-8B



30682 Push-on Hose Barb to Female SAE JIC 37° Swivel

Thread (in)	Hose size (in)	Part number
7/16 x 20	1/4	30682-4-4B
1/2 x 12	1/4	30682-5-4B
9/16 x 18	1/4	30682-6-6B
3/4 x 16	3/8	30682-8-6B*
3/4 x 16	1/2	30682-8-8B
7/8 x 14	1/2	30682-10-8B*
7/8 x 14	5/8	30682-10-10B
1-1/16 x 12	3/4	30682-12-12B



* 30682-8-6B & 30682-10-8B are dual 37/45 degree.

30882 Push-on Hose Barb to Female SAE 45° Swivel

Thread (in)	Hose size (in)	Part number
7/16 x 20	1/4	30882-4-4B
1/2 x 20	1/4	30882-5-4B
5/8 x 18	3/8	30882-6-6B
3/4 x 16	3/8	30682-8-6B*
3/4 x 16	1/2	30882-8-8B
7/8 x 14	1/2	30682-10-8B*
7/8 x 14	5/8	30882-10-8B
1-1/16 x 14	3/4	30882-12-12B



* 30682-8-6B & 30682-10-8B are dual 37/45 degree.

37G82 Push-on Hose Barb to Female Pipe (NPSM) Swivel with Gasket

Thread (in)	Hose size (in)	Gasket	Part number
1/4- 18	1/4	07G-4	37G82-4-4
1/4- 18	3/8	07G-4	37G82-4-6
3/8- 18	3/8	07G-6	37G82-6-6
1/2- 14	1/2	07G-8	37G82-8-8
1/2- 14	5/8	07G-8	37G82-8-10
3/4- 14	3/4	07G-12	37G82-12-12



G
 Accessories
 Ball / Plug Valves
 Hose & Fittings
 Integrated Fittings
 Misc. Accessories
 Quick Couplings
 Tubing & Fittings



Parker Pneumatic

**Accessories
 Integrated Fittings**

FCC731 Compact Meter Out



Tube size (in)	NPT	Part number
5/32	1/8	FCC731-5/32-2
5/32	1/4	FCC731-5/32-4
1/4	1/8	FCC731-4-2
1/4	1/4	FCC731-4-4
3/8	1/4	FCC731-6-4
3/8	3/8	FCC731-6-6

FCC731 Compact Meter Out - BSPP



Tube size (mm)	BSPP	Part number
4	1/8	FCC731-4M-2G
6	1/8	FCC731-6M-2G
6	1/4	FCC731-6M-4G
8	1/8	FCC731-8M-2G
8	1/4	FCC731-8M-4G
8	3/8	FCC731-8M-6G
10	1/4	FCC731-10M-4G
10	3/8	FCC731-10M-6G
12	3/8	FCC731-12M-6G
12	1/2	FCC731-12M-8G

**FCCB731 Compact
 Bi-Directional Flow Control**



Tube size (in)	NPT	Part number
5/32	1/8	FCCB731-5/32-2
1/4	1/8	FCCB731-4-2
1/4	1/4	FCCB731-4-4

**FCCB731 Compact
 Bi-directional Flow Control - BSPP**



Tube size (mm)	BSPP	Part number
4	1/8	FCCB731-4M-2G
6	1/8	FCCB731-6M-2G
6	1/4	FCCB731-6M-4G
8	1/8	FCCB731-8M-2G
8	1/4	FCCB731-8M-4G
8	3/8	FCCB731-8M-6G

FCKC731 Knobless Meter Out Flow Control



Tube size (in)	NPT / UNF	Part number
1/8	10-32	FCKC731-2-0
1/8	1/8	FCKC731-2-2
5/32	10-32	FCKC731-5/32-0
5/32	1/8	FCKC731-5/32-2
1/4	10-32	FCKC731-4-0
1/4	1/8	FCKC731-4-2
1/4	1/4	FCKC731-4-4
5/16	1/8	FCKC731-5-2
5/16	1/4	FCKC731-5-4
3/8	1/4	FCKC731-6-4
3/8	3/8	FCKC731-6-6

**FCKC731 Knobless Compact
 Flow Control - BSPP**



Tube size (mm)	BSPP	Part number
4	M5x0.8	FCKC731-4M-M5
4	1/8	FCKC731-4M-2G
6	M5x0.8	FCKC731-6M-M5
6	1/8	FCKC731-6M-2G
6	1/4	FCKC731-6M-4G
8	1/8	FCKC731-8M-2G
8	1/4	FCKC731-8M-4G
8	3/8	FCKC731-8M-6G
10	1/4	FCKC731-10M-4G
10	3/8	FCKC731-10M-6G
10	1/2	FCKC731-10M-8G
12	3/8	FCKC731-12M-6G
12	1/2	FCKC731-12M-8G

**FCKCB731 Knobless Bi-directional
 Flow Control - BSPP**



Tube size (mm)	BSPP / M5	Part number
4	M5x0.8	FCKCB731-4M-M5
4	1/8	FCKCB731-4M-2G
6	M5x0.8	FCKCB731-6M-M5
6	1/8	FCKCB731-6M-2G
6	1/4	FCKCB731-6M-4G
8	1/8	FCKCB731-8M-2G
8	1/4	FCKCB731-8M-4G
8	3/8	FCKCB731-8M-6G

FCM731 Miniature Meter Out Flow Control



Tube size (in)	NPT	Part number
1/8	10-32	FCM731-2-0
1/8	1/8	FCM731-2-2
5/32	10-32	FCM731-5/32-0
5/32	1/8	FCM731-5/32-2
1/4	10-32	FCM731-4-0
1/4	1/8	FCM731-4-2
1/4	1/4	FCM731-4-4

FCM731 Miniature Flow Control - BSPP



Tube size (mm)	BSPP	Part number
3	M3x0.5	FCM731-3M-M3
3	M5x0.8	FCM731-3M-M5
4	M3x0.5	FCM731-4M-M3
4	M5x0.8	FCM731-4M-M5
4	1/8	FCM731-4M-2G
6	M5x0.8	FCM731-6M-M5
6	1/8	FCM731-6M-2G
6	1/4	FCM731-6M-4G
8	1/8	FCM731-8M-2G
8	1/4	FCM731-8M-4G
8	3/8	FCM731-8M-6G

Most popular.



Parker Pneumatic

**Accessories
 Integrated Fittings**

FCMB731 Miniature Bi-directional Flow Control - BSPP



Tube size (mm)	BSPP	Part number
4	M5x0.8	FCMB731-4M-M5
4	1/8	FCMB731-4M-2G
6	M5x0.8	FCMB731-6M-M5
6	1/8	FCMB731-6M-2G
6	1/4	FCMB731-6M-4G

FCMK731 Knobless Mini Meter Out Flow Control



Tube size (in)	NPT	Part number
1/8	10-32	FCMK731-2-0
1/8	1/8	FCMK731-2-2
5/32	10-32	FCMK731-5/32-0
5/32	1/8	FCMK731-5/32-2
1/4	10-32	FCMK731-4-0
1/4	1/8	FCMK731-4-2
1/4	1/4	FCMK731-4-4

FCCS731 Compact Swivel Outlet Flow Control



Tube size (in)	NPT	Part number
1/4	1/8	FCCS731-4-2
1/4	1/4	FCCS731-4-4
3/8	1/4	FCCS731-6-4
3/8	3/8	FCCS731-6-6

FCMS731 Mini Swivel Outlet Flow Control



Tube size (in)	NPT	Part number
5/32	10-32	FCMS731-5/32-0
5/32	1/8	FCMS731-5/32-2

FCMS731 Miniature Swivel Outlet - BSPP



Tube size (mm)	NPT	Part number
4	M5x0.8	FCMS731-4M-M5
4	1/8	FCMS731-4M-2G
6	M5x0.8	FCMS731-6M-M5
6	1/8	FCMS731-6M-2G

FCCS731 Compact Swivel Outlet - BSPP



Tube size (mm)	BSPP	Part number
6	1/8	FCCS731-6M-2G
6	1/4	FCCS731-6M-4G
8	1/8	FCCS731-8M-2G
8	1/4	FCCS731-8M-4G
10	3/8	FCCS731-8M-6G
10	1/4	FCCS731-10M-4G
10	3/8	FCCS731-10M-6G
12	3/8	FCCS731-12M-6G
12	1/2	FCCS731-12M-8G

Most popular.

FCMSP731 Plug-In Mini Flow Control



Tube size (in)	Part number
1/8	FCMSP731-2
5/32	FCMSP731-5/32
1/4	FCMSP731-4

FCMSP701 Plug-In Miniature Flow Control



Tube size (mm)	Part number
4	FCMSP701-4M
6	FCMSP701-6M

FCCSP731 Plug-In Compact Flow Control



Tube size (mm)	Part number
6	FCCSP731-6M
8	FCCSP731-8M
10	FCCSP731-10M
12	FCCSP731-12M

FC832 In-Line Flow Control



Tube size (in)	Part number
5/32	FC832-5/32
1/4	FC832-4
5/16	FC832-5
3/8	FC832-6
1/2	FC832-8

FC832 In-Line Flow Control



Tube size (mm)	Part number
4	FC832-4M
6	FC832-6M
8	FC832-8M
10	FC832-10M
12	FC832-12M

FCB832 In-Line Bi-directional Flow Control



Tube size (in)	Part number
5/32	FCB832-5/32
1/4	FCB832-4
5/16	FCB832-5

FCB832 In-Line Bi-directional Flow Control



Tube size (mm)	Part number
4	FCB832-4M
6	FCB832-6M
8	FCB832-8M

G
 Accessories
 Ball / Plug Valves
 Hose & Fittings
 Integrated Fittings
 Misc. Accessories
 Couplings
 Tubing & Fittings



Parker Pneumatic

**Accessories
 Integrated Fittings**

**FCPM832 In-Line Panel Mountable
 Flow Control**



Tube size (mm)	Part number
4	FCPM832-4M
6	FCPM832-6M
8	FCPM832-8M
10	FCPM832-10M
12	FCPM832-12M

FC836 Threaded In-Line Flow Control



Port size (in)	Part number
1/8	FC836-2
1/4	FC836-4
3/8	FC836-6
1/2	FC836-8

FC836 Threaded In-Line Flow Control - BSPP



Port size BSPP	Part number
1/8	FC836-2G
1/4	FC836-4G
3/8	FC836-6G
1/2	FC836-8G

337 Micrometer Flow Control Valves



Port size (in)	Part number
1/8	00337 1000
1/4	00337 1001
3/8	00337 1002
1/2	00337 1003
3/4	00337 1004

337 Micrometer Flow Control Valves - BSPP



Port size (in)	Part number
1/8	00337G1000
1/4	00337G1001

338 Bi-directional Flow Control Valves



Port size (in)	Part number
1/8	00338 1100
1/4	00338 1101
3/8	00338 1102
1/2	00338 1103
3/4	00338 1104

338 Bi-directional Flow Control Valves - BSPP



Port size (in)	Part number
1/8	00338G1100
1/4	00338G1101

3250 Flow Control Valves



Port size (in)	Part number
1/8	03250 0119
1/4	03250 0219
3/8	03250 0319
1/2	03250 0419
3/4	03250 0519

3250 Flow Control Valves - BSPP



Port size (in)	Part number
1/8	3250G0119
1/4	3250G0219
3/8	3250G0319
1/2	3250G0419
3/4	3250G0519

3250 Flow Control Valves



Port size (in)	Part number
1	3250 1000
1-1/4	3250 1250
1-1/2	3250 1500

3250 Flow Control Valves - BSPP



Port size (in)	Part number
1	3250G1000
1-1/4	3250G1250
1-1/2	3250G1500

Most popular.



Parker Pneumatic

**Accessories
 Integrated Fittings**

3251 Series Flow Control Valves



Thread (NPT) Male	Thread (NPT) Female	Right angle flow control valves
1/8	1/8	03251 0125
1/4	1/4	03251 0250
3/8	3/8	03251 0375
1/2	1/2	03251 0500



With Prestolok fittings		
1/8	5/32	03251 1215
1/8	1/4	03251 1225
1/4	1/4	03251 2525
1/4	3/8	03251 2538
3/8	3/8	03251 3838

CAUTION: If it is possible that the ambient temperature may fall below freezing, the medium must be moisture-free to prevent internal damage or unpredictable behavior.

FC705 Push-to-Connect Metal Flow Control



Tube size (in)	NPT	Part number
5/32	1/8	FC705-5/32-2
1/4	1/8	FC705-4-2
1/4	1/4	FC705-4-4
3/8	1/4	FC705-6-4
3/8	3/8	FC705-6-6

FC701 Push-to-Connect Metal Flow Control - BSPP



Tube Size (mm)	BSPP	Part number
4	1/8	FC701-4M-2G
6	1/8	FC701-6M-2G
6	1/4	FC701-6M-4G
8	1/8	FC701-8M-2G
8	1/4	FC701-8M-4G
8	3/8	FC701-8M-6G
10	1/4	FC701-10M-4G
10	3/8	FC701-10M-6G
12	3/8	FC701-12M-6G
12	1/2	FC701-12M-8G
14	1/2	FC701-14M-8G

FC708 Threaded Port Meter Out Flow Control



Port size (in)	Part number
1/8	FC708-2
1/4	FC708-4
3/8	FC708-6
1/2	FC708-8

Most popular.

FC702 Threaded Port Metal Flow Control - BSPP



Port size BSPP	Part number
1/8	FC702-2G
1/4	FC702-4G
3/8	FC702-6G
1/2	FC702-8G

32PLCK In-Line Check Valve



Tube size (in)	Part number
5/32	32PLCK-5/32
1/4	32PLCK-4
5/16	32PLCK-5
3/8	32PLCK-6

32PLCK In-Line Check Valve



Tube size (mm)	Part number
4	32PLCK-4M
6	32PLCK-6M
8	32PLCK-8M
10	32PLCK-10M
12	32PLCK-12M

W68PLCK Male Check Valve



Tube size (in)	NPT / UNF	Part number
5/32	10-32	68PLCK-5/32-0
5/32	1/8	W68PLCK-5/32-2
1/4	1/8	W68PLCK-4-2
1/4	1/4	W68PLCK-4-4
3/8	1/4	W68PLCK-6-4
3/8	3/8	W68PLCK-6-6

W68PLCKI Male Check Valve - Meter In



Tube size (in)	NPT / UNF	Part number
5/32	10-32	68PLCKI-5/32-0
5/32	1/8	W68PLCKI-5/32-2
1/4	1/8	W68PLCKI-4-2
1/4	1/4	W68PLCKI-4-4
3/8	1/4	W68PLCKI-6-4
3/8	3/8	W68PLCKI-6-6

G
 Accessories
 Ball / Plug Valves
 Hose & Fittings
 Integrated Fittings
 Misc. Accessories
 Couplings
 Tubing & Fittings



Parker Pneumatic

**Accessories
 Integrated Fittings**

68PLCK Male Check Valve Meter Out - BSPP



Tube size (mm)	BSPP	Part number
4	M5x0.8	68PLCK-4M-M5
4	1/8	68PLCK-4M-2G
6	1/8	68PLCK-6M-2G
6	1/4	68PLCK-6M-4G
8	1/8	68PLCK-8M-2G
8	1/4	68PLCK-8M-4G

68PLCKI Male Check Valve Meter In - BSPP



Tube size (mm)	BSPP	Part number
4	M5x0.8	68PLCKI-4M-M5
6	1/8	68PLCKI-6M-2G
8	1/8	68PLCKI-8M-2G
8	1/4	68PLCKI-8M-4G
10	3/8	68PLCKI-10M-6G
12	3/8	68PLCKI-12M-6G
12	1/2	68PLCKI-12M-8G

VC - Check Valve



Tube size (in)	O.D.	Part number
1/4	.66	A4VC4-MG
5/16	.70	A5VC5-MG
3/8	.80	A6VC6-MG

339 Check Valve



Port size	Part number
1/8"	00339 3000
1/4"	00339 3001
3/8"	00339 3002
1/2"	00339 3003
3/4"	00339 3004

339 Check Valve - BSPP



Port size	Part number
1/8"	00339G3000
1/4"	00339G3001

3047 Check Valve



Pipe thread	Part number
1/4"	03047 0099

FC601 Push-to-Connect Lock Out Valves



Tube size (in)	NPT	Part number
1/4	1/8	FC601-4-2
1/4	1/4	FC601-4-4
3/8	3/8	FC601-6-6
1/2	1/2	FC601-8-8

FC601 Push-to-Connect Lock-Out Valve - BSPP



Tube size (mm)	BSPP	Part number
6	1/8	FC601-6M-2G
6	1/4	FC601-6M-4G
8	1/4	FC601-8M-4G
8	3/8	FC601-8M-6G
10	3/8	FC601-10M-6G
12	1/2	FC601-12M-8G

FC602 Threaded Port Lock Out Valves



NPT 1	NPT 2	Part number
1/4	1/8	FC602-2
1/4	1/4	FC602-4
3/8	3/8	FC602-6
1/2	1/2	FC602-8

FC608 Threaded Port Lock-Out Valve - BSPP



BSPP 1	BSPP 2	Part number
1/8	1/4	FC608-4G-2G
1/4	1/4	FC608-4G-4G
3/8	3/8	FC608-6G-6G
1/2	1/2	FC608-8G-8G

PSBJ731 Pneumatic Threshold Sensor - 5/32 Pilot



NPT / UNF	Part number
10-32	PSBJ731-0
1/8	PSBJ731-2
1/4	PSBJ731-4
3/8	PSBJ731-6
1/2	PSBJ731-8

PSBJ731 Pneumatic Threshold Sensor - 4mm Pilot



BSPP	Part number
M5x0.8	PSBJ731-M5
1/8	PSBJ731-2G
1/4	PSBJ731-4G
3/8	PSBJ731-6G
1/2	PSBJ731-8G

Most popular.



Parker Pneumatic

Accessories

Integrated Fittings, Tank Valves, Air Chucks

PSPJ731 Pneumatic Threshold Sensor - 10-32 Pilot

NPT	Part number
1/8	PSPJ731-2
1/4	PSPJ731-4
3/8	PSPJ731-6



PSPE731 Pneumatic / Electric Threshold Sensor - BSPP

BSPP	Part number
M5x0.8	PSPE731-M5
1/8	PSPE731-2G
1/4	PSPE731-4G
3/8	PSPE731-6G
1/2	PSPE731-8G



PSBJ708 Pneumatic Threshold Sensor - M5 Pilot

BSPP	Part number
1/8	PSBJ708-2G
1/4	PSBJ708-4G



Tank Valves & Air Chucks

09166 0060
1/8" pipe thread, dome shaped cap

Thread size	Part number
1/8	09166 0060



05499 0000
1/4" female port, ball-foot air chuck

Thread size	Part number
1/4	05499 0000



00645 0060
1/8" pipe thread at bottom, screwdriver type cap

Thread size	Part number
1/8	00645 0060



06739 0000
1/4" port, ball-foot air chuck with clip

Thread size	Part number
1/4	06739 0000



01468 0006
1/8" pipe thread part way up the stem, screwdriver type cap

Thread size	Part number
1/8	01468 0006



Most popular.

G
 Accessories
 Ball / Plug Valves
 Hose & Fittings
 Integrated Fittings
 Misc. Accessories
 Quick Couplings
 Tubing & Fittings



Parker Pneumatic

**Accessories
 Mufflers / Silencers**

Mufflers / Silencers

EM Sintered Bronze Muffler / Filters



Thread size	Part number
M5	EMM5
1/8	EM12
1/4	EM25
3/8	EM37
1/2	EM50
3/4	EM75
1	EM100
1-1/4	EM125
1-1/2	EM150

Muffler / Flow Controls



Thread size	Part number
1/8	04502 0002
1/4	04504 0004
3/8	04506 0060
1/2	04508 0080
3/4	04512 0012
1	04516 0016

Breather Vents



Thread size	Part number
1/8	04702 0002
1/4	04704 0004
3/8	04706 0006
1/2	04708 0008
3/4	04712 0012
1	04716 0016
1-1/4	04720 0020
1-1/2	04724 0024

NOTE: Breather vents should not be used as exhaust mufflers.

ES Silencer



Thread size	Part number
1/8	ES12MC
1/4	ES25MC
3/8	ES37MC
1/2	ES50MC
3/4	ES75MC
1	ES100MC
1-1/4	ES125MC
1-1/2	ES150MC

Most popular.

ASN Air Line Silencer, Plastic



Thread size	Part number
M5	AS-5
1/8	ASN-6
1/4	ASN-8
3/8	ASN-10
1/2	ASN-15

P6M G Thread, Air Line Silencer, Plastic



Thread size	Part number
M5	P6M-PAC5
G1/8	P6M-PAB1
G1/4	P6M-PAB2
G3/8	P6M-PAB3
G1/2	P6M-PAB4
G3/4	P6M-PAB6
G1	P6M-PAB8

ECS Reclassifier, Air Line Muffler



Thread size	Part number
1/2	ECS3
1	ECS5

Stainless Steel Mufflers



Pipe size	Part number
1/4	5500A2004
1/2	5500A4004
1	5500A6004
2	5500A9004 **

** Nickel Plated



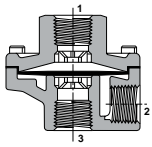
Parker Pneumatic

Accessories

Quick Exhaust & Shuttle and Relief Valves

OR Quick Exhaust

Port 1	Port 2	Port 3	Flow (SCFM)	Part number with panel nut
Standard version				
1/4	1/4	3/8	150	OR25NB
1/4	3/8	3/8	240	OR25PB
3/8	3/8	3/8	240	OR37B
1/2	1/2	1/2	450	OR50B
3/4	3/4	3/4	550	OR75B
Nitrile diaphragms				
1/8	1/8	1/8	70	OR12B
1/8	1/8	1/4	70	OR12NB
1/4	1/4	1/4	90	OR25B
1/4	1/4	3/8	90	OR25NFB
3/8	3/8	3/8	240	OR37FB
3/4	3/4	3/4	550	OR75FB
Fluorocarbon diaphragms				
1/8	1/8	1/8	70	OR12VB
1/8	1/8	1/4	70	OR12NVB
1/4	1/4	1/4	90	OR25VB
3/8	3/8	3/8	240	OR37VB
1/2	1/2	1/2	450	OR50VB
3/4	3/4	3/4	550	OR75VB
PTFE diaphragms				
3/8	3/8	3/8	240	OR37TB



RV Relief Valve



Pressure (PSI)	Part number
***	RV01AN***

*** 010 through 200 psi

130 Relief Valve



Spring range	Part number no panel nut	Part number with panel nut
0-15 PSIG	130-02AA	130-02AAP
0-25 PSIG	130-02A	130-02AP
0-50 PSIG	130-02B	130-02BP
0-100 PSIG	130-02C	130-02CP

134 Relief Valve



Spring range	Part number no panel nut	Part number with panel nut
0-15 PSIG	134-02AA	134-02AAP
0-25 PSIG	134-02A	134-02AP
0-50 PSIG	134-02B	134-02BP
0-100 PSIG	134-02C	134-02CP

N164 Shuttle Valve



Thread size	Part number
1/8	N164 1001
1/4	N164 2003
3/8	N164 3003

G

Accessories

Ball / Plug Valves

Hose & Fittings

Integrated Fittings

Misc. Accessories

Quick Couplings

Tubing & Fittings

Most popular.



Parker Pneumatic

Accessories

Blow Guns and Drip Leg Drain

Brass Nozzle Blow Gun



Inlet port	Part number
Lever operated	
1/4	00475 0010
Button operated	
1/4	00470 0010

Automatic Drip Leg Drain



Thread size	Part number
1/4	06D1NA
1/2	06D3NA

Brass Nozzle Blow Gun



Inlet port	Part number
Lever operated	
1/4	00475 0900
Button operated	
1/4	00470 0900

Self-Regulating Blow Gun



Inlet port	Part number
Lever operated	
1/4	00475 2900

PPS1 Pressure Switch



Thread size	Part number
1/4 NPT	PPS1-1C3-RHM
1/8 NPT	PPS1-2C3-RHM
1/4" NPT	PPS1-1C3-RWL
1/8" NPT	PPS1-2C3-RWL

Pistol Grip Blow Gun



Inlet port	Part number
1/4	BG441-NBL

Brass Nozzle



Part number
00470 7020

Most popular.

G
 Accessories
 Ball / Plug Valves
 Hose & Fittings
 Integrated Fittings
 Misc. Accessories
 Quick Couplings
 Tubing & Fittings





Optimize Machine Performance and Avoid Downtime

SensoControl® Diagnostic

Optimize or troubleshoot hydraulic and pneumatic systems with SensoControl diagnostic meters.

- Detect intermittent problems
- Innovative recording capabilities
- In-depth analysis
- Pressure, flow, RPM, and temperature measurements



SensoControl® Industrial

Continuously monitor or control a system's pressure, temperature, or fluid level with SensoControl sensors and controllers.

- Reliable performance
- Configurable switch functions
- Easy to read display



Learn more:
www.parker.com/sensocontrol

Contact:
 Parker's Quick Coupling Division
 763-544-7781
QCD_sales@parker.com

G	Accessories
Ball / Plug Valves	
Hose & Fittings	
Integrated Fittings	
Misc. Accessories	
Quick Couplings	
Tubing & Fittings	



Parker Pneumatic

Accessories

Industrial Interchange Nipples

Industrial Interchange Nipples

Hardened wear points and solid barstock construction provide long service life. Precision machined surfaces and hardened load-bearing areas resist the effects of mechanical shock in the most rugged applications. Industrial interchange nipples conform to MIL-C4109 and are for use with either Sleeveomatic or Saffomatic couplers.

Female Pipe Thread



Body size (inches)	Thread size	Part number Steel
1/4	1/8-27	H1C
1/4	1/4-18	H3C
1/4	3/8-18	H3C-E
3/8	1/4-18	H1E
3/8	3/8-18	H3E
3/8	1/2-14	H3E-F
1/2	3/8-18	H1F
1/2	1/2-14	H3F
1/2	3/4-14	H3F-G
3/4	1/2-14	H3G-F
3/4	3/4-14	H3G
3/4	1-11½	H3G-J

Male Pipe Thread



Body size (inches)	Thread size	Part number Steel
1/4	1/8-27	H0C
1/4	1/4-18	H2C
1/4	3/8-18	H2C-E
3/8	1/8-27	H00E
3/8	1/4-18	H0E
3/8	3/8-18	H2E
3/8	1/2-14	H2E-F
1/2	3/8-18	H0F
1/2	1/2-14	H2F
1/2	3/4-14	H2F-G
3/4	1/2-14	H2G-F
3/4	3/4-14	H2G
3/4	1-11½	H2G-J

Most popular.

Standard Hose Barb



Body size (inches)	Hose I.D.	Part number Steel
1/4	1/4	H8C
1/4	5/16	H8C-D
1/4	3/8	H9C
3/8	3/8	H5E
3/8	1/2	H6E
1/2	3/8	H4F
1/2	1/2	H5F
1/2	3/4	H5F-G
3/4	1/2	H5G-F
3/4	3/4	H5G
3/4	1	H5G-J

Push-Lok Hose Barb*



Body size (inches)	Hose I.D.	Part number Steel
1/4	1/4	H8CP
1/4	3/8	H9CP
3/8	1/4	H4EP
3/8	3/8	H5EP
3/8	1/2	H6EP
1/2	3/8	H4FP
1/2	1/2	H5FP
1/2	1/2	H6FP

* Push-Lok hose barbs are designed for use with a push-lok hose and do not require clamps.



G	Accessories
	Ball / Plug Valves
	Hose & Fittings
	Integrated Fittings
	Misc. Accessories
	Quick Couplings
	Tubing & Fittings

Parker Pneumatic

Sleevmatic and Saflomatic Couplers

Sleevmatic Couplers

Female Pipe Thread



Body size (inches)	Thread size	Part number	
		Brass	Steel
1/4	1/8-27	B23A	—
1/4	1/4-18	B23	—
1/4	3/8-18	B23E	—
3/8	1/4-18	—	25C
3/8	3/8-18	—	25
3/8	1/2-14	—	25F
1/2	3/8-18	—	17E
1/2	1/2-14	—	17
1/2	3/4-14	—	17G

Male Pipe Thread



Body size (inches)	Thread size	Part number	
		Brass	Steel
1/4	1/4-18	B22	—
1/4	3/8-18	B22E	—
3/8	1/4-18	—	24C
3/8	3/8-18	—	24
3/8	1/2-14	—	24F
1/2	3/8-18	—	16E
1/2	1/2-14	—	16
1/2	3/4-14	—	16G

Standard Hose Barb



Body size (inches)	Hose I.D.	Part number	
		Brass	Steel
1/4	1/4	B20-3B	—
1/4	5/16	B20-4B	—
1/4	3/8	B20-5B	—
3/8	3/8	—	24-5B
3/8	1/2	—	24-6B
1/2	3/8	—	16-5B
1/2	1/2	—	16-6B
1/2	3/4	—	16-7B

Push-Lok Hose Barb*



Body size (inches)	Hose I.D.	Part number	
		Brass	Steel
1/4	3/8	B20-5BP	—
3/8	3/8	—	24-5BP
1/2	3/8	—	16-5BP
1/2	1/2	—	16-6BP

* Push-Lok hose barbs are designed for use with push-lok hose and do not require clamps.

Most popular.

Saflomatic Couplers

Female Pipe Thread



Body size (inches)	Thread size	Part number	
		Brass	Steel
1/4	1/8-27	B33A	—
1/4	1/4-18	B33	—
1/4	3/8-18	B33E	—
3/8	1/4-18	B35C	—
3/8	3/8-18	B35	—
3/8	1/2-14	B35F	—
1/2	3/8-18	B37E	—
1/2	1/2-14	B37	—
1/2	3/4-14	B37G	—
3/4	1/2-14	B39F	—
3/4	3/4-14	B39	—
3/4	1-11½	B39J	—

Male Pipe Thread



Body size (inches)	Thread size	Part number	
		Brass	Steel
1/4	1/8-27	B32A	—
1/4	1/4-18	B32	—
1/4	3/8-18	B32E	—
3/8	1/4-18	B34C	—
3/8	3/8-18	B34	—
3/8	1/2-14	B34F	—
1/2	3/8-18	B36E	—
1/2	1/2-14	B36	—
1/2	3/4-14	B36G	—
3/4	3/4-14	B38	—
3/4	1-11½	B38J	—

Standard Hose Barb



Body size (inches)	Hose I.D.	Part number	
		Brass	Steel
1/4	1/4	B30-3B	—
1/4	5/16	B30-4B	—
1/4	3/8	B30-5B	—
3/8	3/8	B34-5B	—
3/8	1/2	B34-6B	—
1/2	1/2	B36-6B	—
1/2	3/4	B36-7B	—
3/4	3/4	B38-7B	—
3/4	1	B38-8B	—

Push-Lok Hose Barb*



Body size (inches)	Thread size	Part number	
		Brass	Steel
1/4	1/4	B30-3BP	—
1/4	3/8	B30-5BP	—
3/8	3/8	B34-5BP	—
1/2	1/2	B36-6BP	—

* Push-Lok hose barbs are designed for use with push-lok hose and do not require clamps.

G
 Accessories
 Ball / Plug Valves
 Hose & Fittings
 Integrated Fittings
 Misc. Accessories
 Quick Couplings
 Tubing & Fittings



Parker Pneumatic

Accessories

Economatic Quick Connect Couplers

Couplers Female Pipe Thread



Body size (inches)	Thread size	Part number Brass
1/4	1/4-18 NPTF	B53
1/4	3/8-18 NPTF	B53E

Nipples Female Pipe Thread



Body size (inches)	Thread size	Part number Steel
1/4	1/4-18	A3C

Couplers Male Pipe Thread



Body size (inches)	Thread size	Part number Brass
1/4	1/4-18	B52
1/4	3/8-18	B52E

Nipples Male Pipe Thread



Body size (inches)	Thread size	Part number Steel
1/4	1/4-18	A2C

Couplers Push-Lok Hose Barb*



Body size (inches)	Hose I.D.	Part number Brass
1/4	1/4	B50-03BP
1/4	3/8	B50-05BP

* Push-Lok hose barbs are designed for use with push-lok hose and do not require clamps.

Nipples Standard Hose Barb



Body size (inches)	Hose I.D.	Part number Steel
1/4	1/4	A8C

Nipples Push-Lok Hose Barb*



Body size (inches)	Thread size	Part number Steel
1/4	1/4	A8CP

* Push-Lok barbs are designed for use with push-lok hose and do not require clamps.

Most popular.



Parker Pneumatic

**Accessories
 Tubing**

Polyethylene Tubing

O.D.	I.D.	Reel length (feet)	Color	Part number
1/4	.170	100	Natural	E-43-0100
1/4	.170	500	Natural	E-43-0500
1/4	.170	1000	Natural	E-43-1000
1/4	.170	100	Black	EB-43-0100
1/4	.170	500	Black	EB-43-0500
1/4	.170	1000	Black	EB-43-1000
1/4	.170	100	Red	E-43-R-0100
1/4	.170	500	Red	E-43-R-0500
1/4	.170	100	Blue	E-43-B-0100
1/4	.170	500	Blue	E-43-B-0500
1/4	.170	500	Orange	E-43-O-0500
1/4	.170	500	Yellow	E-43-Y-0500
1/4	.170	500	Purple	E-43-P-0500
1/4	.170	500	Green	E-43-G-0500
5/16	.187	500	Natural	E-53-0500
5/16	.187	500	Black	EB-53-0500
3/8	.250	100	Natural	E-64-0100
3/8	.250	500	Natural	E-64-0500
3/8	.250	100	Black	EB-64-0100
3/8	.250	500	Black	EB-64-0500
3/8	.250	500	Red	E-64-R-0500
3/8	.250	500	Blue	E-64-B-0500
3/8	.250	500	Orange	E-64-O-0500
3/8	.250	500	Yellow	E-64-Y-0500
3/8	.250	500	Purple	E-64-P-0500
3/8	.250	500	Green	E-64-G-0500
1/2	.375	100	Natural	E-86-0100
1/2	.375	100	Black	EB-86-0100
5/8	.500	100	Natural	E-108-0100
5/8	.500	Coil	Black	EB-108-0100



Most popular. For technical information see CD

Polyethelene Tubing

O.D.	I.D.	Reel length (feet)	Part number
5/32	.096	500	PEFR-2.5-0500
1/4	.170	500	PEFR-4-0500
1/4	.170	1000	PEFR-4-1000
3/8	.250	500	PEFR-6-0500
1/2	.375	250	PEFR-8-0250



Most popular.

Polyurethane Tubing

O.D.	I.D.	Reel length (feet)	Part number*
1/8	1/16	500	U-21-xxx-0500
		250	U-21-xxx-0250
1/4	1/8	500	U-42-xxx-0500
		250	U-42-xxx-0250
3/8	1/4	250	U-64-xxx-0250
		100 (coil)	U-64-xxx-0100
1/2	3/8	250	U-86-xxx-0250
		100 (coil)	U-86-xxx-0100



* xxx = Colors: Clear-Blank, Black-BLK, Green-GRN, Red-RED, Yellow-YEL, Blue-BLU, Orange-ORG, Gray-GRA (Example: U-21-BLK-0250)

Nylon Tubing

O.D.	I.D.	Reel length (feet)	Color	Part number
1/8	.093	250	Natural	NN-2-016
1/8	.093	250	Black	NB-2-016
1/8	.064	250	Natural	NN-2-031
1/8	.064	250	Black	NB-2-031
5/32	.106	250	Natural	NN-2.5-025
5/32	.106	250	Black	NB-2.5-025
3/16	.138	250	Natural	NN-3-025
3/16	.138	250	Black	NB-3-025
3/16	.096	250	Natural	NN-3-046
3/16	.096	250	Black	NB-3-046
1/4	.180	250	Natural	NN-4-035
1/4	.180	250	Black	NB-4-035
1/4	.170	250	Natural	NN-4-040
1/4	.170	250	Black	NB-4-040
1/4	.127	250	Natural	NN-4-062
1/4	.127	250	Black	NB-4-062
5/16	.233	250	Natural	NN-5-040
5/16	.233	250	Black	NB-5-040
3/8	.275	250	Natural	NN-6-050
3/8	.275	250	Black	NB-6-050
3/8	.190	250	Natural	NN-6-093
3/8	.190	250	Black	NB-6-093
1/2	.375	250	Natural	NN-8-062
1/2	.375	250	Black	NB-8-062
1/2	.253	250	Natural	NN-8-124
1/2	.253	250	Black	NB-8-124



*Suggested working pressure is 1/4 of burst pressure.

G
 Accessories
 Ball / Plug Valves
 Hose & Fittings
 Integrated Fittings
 Misc. Accessories
 Quick Couplings
 Tubing & Fittings



Parker Pneumatic

**Accessories
 Tubing**

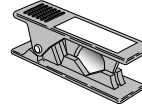
Nylon Tubing

O.D.	I.D.	Reel length (feet)	Color	Part number
1/8	.091	500	Natural	NNR-2-017
1/8	.091	500	Black	NBR-2-017
1/8	.073	500	Natural	NNR-2-026
1/8	.073	500	Black	NBR-2-026
3/16	.140	500	Natural	NNR-3-024
3/16	.140	500	Black	NBR-3-024
3/16	.110	500	Natural	NNR-3-039
3/16	.110	500	Black	NBR-3-039
1/4	.180	250	Natural	NNR-4-035
1/4	.180	250	Black	NBR-4-035
1/4	.150	250	Natural	NNR-4-050
1/4	.150	250	Black	NBR-4-050
5/16	.233	250	Natural	NNR-5-040
5/16	.233	250	Black	NBR-5-040
3/8	.279	250	Natural	NNR-6-048
3/8	.279	250	Black	NBR-6-048
3/8	.225	250	Natural	NNR-6-075
3/8	.225	250	Black	NBR-6-075
1/2	.376	250	Natural	NNR-8-062
1/2	.376	250	Black	NBR-8-062
1/2	.350	250	Natural	NNR-8-075
1/2	.350	250	Black	NBR-8-075



*Suggested working pressure is 1/4 of burst pressure.

Plastic Tube Cutter



Part number
PTC-001

Replacement Blades



Part number
PTC-001RB

Most popular.



Parker Pneumatic

Accessories

Push-to-Connect, Prestolok Composite

W369PLP Male Elbow Swivel 90°



Tube size (in.)	Thread NPT / UNF	Part number
1/8	10-32	369PLP-2-0
1/8	1/16	W369PLP-2-1
1/8	1/8	W369PLP-2-2
1/8	1/4	W369PLP-2-4
5/32	10-32	369PLP-5/32-0
5/32	1/8	W369PLP-5/32-2
5/32	1/4	W369PLP-5/32-4
3/16	1/8	W369PLP-3-2
1/4	10-32	369PLP-4-0
1/4	1/8	W369PLP-4-2
1/4	1/4	W369PLP-4-4
1/4	3/8	W369PLP-4-6
5/16	1/8	W369PLP-5-2
5/16	1/4	W369PLP-5-4
5/16	3/8	W369PLP-5-6
3/8	1/8	W369PLP-6-2
3/8	1/4	W369PLP-6-4
3/8	3/8	W369PLP-6-6
3/8	1/2	W369PLP-6-8
1/2	1/4	W369PLP-8-4
1/2	3/8	W369PLP-8-6
1/2	1/2	W369PLP-8-8

W379PLP Male Elbow 45°



Tube size (in.)	Thread NPT / UNF	Part number
1/8	10-32	379PLP-2-0
1/8	1/8	W379PLP-2-2
1/4	1/8	W379PLP-4-2
1/4	1/4	W379PLP-4-4
1/4	M7	W379PLP-4-M7
3/8	1/4	W379PLP-6-4
3/8	3/8	W379PLP-6-6

W372PLP Male Branch Tee Swivel



Tube size (in.)	Thread NPT / UNF	Part number
1/8	10-32	372PLP-2-0
1/8	1/16	W372PLP-2-1
1/8	1/8	W372PLP-2-2
1/8	1/4	W372PLP-2-4
5/32	10-32	372PLP-5/32-0
5/32	1/8	W372PLP-5/32-2
5/32	1/4	W372PLP-5/32-4
3/16	1/8	W372PLP-3-2
1/4	1/8	W372PLP-4-2
1/4	1/4	W372PLP-4-4
1/4	3/8	W372PLP-4-6
5/16	1/8	W372PLP-5-2
5/16	1/4	W372PLP-5-4
5/16	3/8	W372PLP-5-6
3/8	1/8	W372PLP-6-2
3/8	1/4	W372PLP-6-4
3/8	3/8	W372PLP-6-6
3/8	1/2	W372PLP-6-8
1/2	1/4	W372PLP-8-4
1/2	3/8	W372PLP-8-6
1/2	1/2	W372PLP-8-8

W369PLPX Extended Male Elbow



Tube size (in.)	Thread NPT / UNF	Part number
1/8	10-32	369PLPX-2-0
1/8	1/8	W369PLPX-2-2
1/8	1/4	W369PLPX-2-4
5/32	10-32	369PLPX-5/32-0
5/32	1/8	W369PLPX-5/32-2
5/32	1/4	W369PLPX-5/32-4
1/4	10-32	369PLPX-4-0
1/4	M7	369PLPX-4-M7
1/4	1/8	W369PLPX-4-2
1/4	1/4	W369PLPX-4-4
1/4	3/8	W369PLPX-4-6
5/16	1/8	W369PLPX-5-2
5/16	1/4	W369PLPX-5-4
3/8	1/8	W369PLPX-6-2
3/8	1/4	W369PLPX-6-4
3/8	3/8	W369PLPX-6-6

Most popular.

G

Accessories

Ball / Plug Valves

Hose & Fittings

Integrated Fittings

Misc. Accessories

Quick Couplings

Tubing & Fittings



Parker Pneumatic

Accessories

Push-to-Connect, Prestolok Composite

W371PLP Male Run Tee Swivel



Tube size (in.)	Thread NPT / UNF	Part number
1/8	10-32	371PLP-2-0
1/8	1/16	W371PLP-2-1
1/8	1/8	W371PLP-2-2
5/32	10-32	371PLP-5/32-0
5/32	1/8	W371PLP-5/32-2
5/32	1/4	W371PLP-5/32-4
3/16	1/8	W371PLP-3-2
1/4	1/8	W371PLP-4-2
1/4	1/4	W371PLP-4-4
1/4	3/8	W371PLP-4-6
5/16	1/8	W371PLP-5-2
5/16	1/4	W371PLP-5-4
5/16	3/8	W371PLP-5-6
3/8	1/8	W371PLP-6-2
3/8	1/4	W371PLP-6-4
3/8	3/8	W371PLP-6-6
3/8	1/2	W371PLP-6-8
1/2	1/4	W371PLP-8-4
1/2	3/8	W371PLP-8-6
1/2	1/2	W371PLP-8-8

W68PLPSP Male Standpipe



Tube size (in.)	Thread NPT / UNF	Part number
5/32	10-32	68PLPSP-5/32-0
5/32	1/8	W68PLPSP-5/32-2
5/32	1/4	W68PLPSP-5/32-4
1/4	1/8	W68PLPSP-4-2
1/4	1/4	W68PLPSP-4-4
5/16	1/8	W68PLPSP-5-2
5/16	1/4	W68PLPSP-5-4
3/8	1/8	W68PLPSP-6-2
3/8	1/4	W68PLPSP-6-4
3/8	3/8	W68PLPSP-6-6
1/2	3/8	W68PLPSP-8-6
1/2	1/2	W68PLPSP-8-8

W368PLP Male Y Connector



Tube size (in.)	Thread NPT / UNF	Part number
5/32	1/8	W368PLP-5/32-2
5/32	1/4	W368PLP-5/32-4
1/4	1/8	W368PLP-4-2
1/4	1/4	W368PLP-4-4
3/8	1/4	W368PLP-6-4
3/8	3/8	W368PLP-6-6

Most popular.

32PLP Equal Union



Tube Size (in.)	Part number
1/8	32PLP-2
5/32	32PLP-5/32
3/16	32PLP-3
1/4	32PLP-4
5/16	32PLP-5
3/8	32PLP-6
1/2	32PLP-8

365PLP Union Elbow



Tube Size (in.)	Part number
1/8	365PLP-2
5/32	365PLP-5/32
3/16	365PLP-3
1/4	365PLP-4
5/16	365PLP-5
3/8	365PLP-6
1/2	365PLP-8

364PLP Union Tee



Tube Size (in.)	Part number
1/8	364PLP-2
5/32	364PLP-5/32
3/16	364PLP-3
1/4	364PLP-4
5/16	364PLP-5
3/8	364PLP-6
1/2	364PLP-8

362PLP Union Y Connector



1 Tube size (in.)	2 Tube size (in.)	Part number
1/8	1/8	362PLP-2
1/8	1/4	362PLP-2-4
5/32	5/32	362PLP-5/32
5/32	1/4	362PLP-5/32-4
1/4	1/4	362PLP-4
1/4	3/8	362PLP-4-6
5/16	5/16	362PLP-5
3/8	3/8	362PLP-6

362PLPD Double Y Connector



1 Tube size (in.)	2 Tube size (in.)	Part number
5/32	5/32	362PLPD-5/32
5/32	1/4	362PLPD-5/32-4

G

Accessories

Ball / Plug Valves

Hose & Fittings

Integrated Fittings

Misc. Accessories

Quick Couplings

Tubing & Fittings



Parker Pneumatic

Accessories

Push-to-Connect, Prestolok Composite

24PLP Multiple Tee



1 Tube size (in.)	2 Tube size (in.)	Part number
1/4	5/32	24PLP-4-5/32
1/4	1/4	24PLP-4-4
5/16	5/32	24PLP-5-5/32
3/8	1/4	24PLP-6-4

24PLPD Double Multiple Tee



1 Tube size (in.)	2 Tube size (in.)	Part number
1/4	5/32	24PLPD-4-5/32
1/4	1/4	24PLPD-4-4
5/16	5/32	24PLPD-5-5/32
3/8	1/4	24PLPD-6-4

347PLP Equal Cross



Tube Size (in.)	Part number
5/32	347PLP-5/32
1/4	347PLP-4
5/16	347PLP-5

32PLPRC Connector for 2 Tubes



Tube Size (in.)	Part number
5/32	32PLPRC-5/32
1/4	32PLPRC-4
5/16	32PLPRC-5

32PLPDRC Connector for 3 Tubes



Tube Size (in.)	Part number
5/32	32PLPDRC-5/32
5/16	32PLPDRC-5

377PLP Female Branch Tee Swivel



Tube size (in.)	Thread NPT / UNF	Part number
1/8	1/8	377PLP-2-2
5/32	1/8	377PLP-5/32-2
5/32	1/4	377PLP-5/32-4
1/4	1/8	377PLP-4-2
1/4	1/4	377PLP-4-4
5/16	1/8	377PLP-5-2
5/16	1/4	377PLP-5-4
3/8	1/4	377PLP-6-4
1/2	3/8	377PLP-8-6

Most popular.

370PLP Female Elbow Swivel



Tube size (in.)	Thread NPT	Part number
1/8	1/8	370PLP-2-2
5/32	1/8	370PLP-5/32-2
5/32	1/4	370PLP-5/32-4
1/4	1/8	370PLP-4-2
1/4	1/4	370PLP-4-4
5/16	1/8	370PLP-5-2
5/16	1/4	370PLP-5-4
3/8	1/4	370PLP-6-4
1/2	3/8	370PLP-8-6

32PLPBH Bulkhead Union



Tube Size (in.)	Part number
1/8	32PLPBH-2
5/32	32PLPBH-5/32
1/4	32PLPBH-4
5/16	32PLPBH-5
3/8	32PLPBH-6
1/2	32PLPBH-8

365PLPBH Equal Bulkhead Elbow



Tube size (in.)	Thread NPT / UNF	Part number
1/8	13	365PLPBH-2
5/32		365PLPBH-5/32
1/4	18	365PLPBH-4
5/16		365PLPBH-5
3/8	22	365PLPBH-6
1/2	29	365PLPBH-8

369PLPSP Plug-In Elbow



1 Tube size (in.)	2 Tube size (in.)	Part number
1/8	1/8	369PLPSP-2
5/32	5/32	369PLPSP-5/32
5/32	1/4	369PLPSP-5/32-4
1/4	1/4	369PLPSP-4
1/4	3/8	369PLPSP-4-6
5/16	5/16	369PLPSP-5
3/8	3/8	369PLPSP-6
1/2	1/2	369PLPSP-8

G
 Accessories
 Ball / Plug Valves
 Hose & Fittings
 Integrated Fittings
 Misc. Accessories
 Quick Couplings
 Tubing & Fittings



Parker Pneumatic

Accessories

Push-to-Connect, Prestolok Composite

369PLPSPX Extended Plug-In Elbow



1 Tube size (in.)	2 Tube size (in.)	Part number
1/8	1/8	369PLPSPX-2
5/32	5/32	369PLPSPX-5/32
1/4	1/4	369PLPSPX-4
5/16	5/16	369PLPSPX-5
3/8	3/8	369PLPSPX-6

379PLPSP 45° Plug-In Elbow



1 Tube size (in.)	2 Tube size (in.)	Part number
1/8	1/8	379PLPSP-2
5/32	5/32	379PLPSP-5/32
1/4	1/4	379PLPSP-4
5/16	5/16	379PLPSP-5
3/8	3/8	379PLPSP-6

372PLPSP Plug-In Branch Tee



1 Tube size (in.)	2 Tube size (in.)	Part number
1/8	1/8	372PLPSP-2
5/32	5/32	372PLPSP-5/32
1/4	1/4	372PLPSP-4
5/16	5/16	372PLPSP-5
3/8	3/8	372PLPSP-6
1/2	1/2	372PLPSP-8

371PLPSP Plug-In Run Tee



1 Tube size (in.)	2 Tube size (in.)	Part number
5/32	5/32	371PLPSP-5/32
1/4	1/4	371PLPSP-4
5/16	5/16	371PLPSP-5
3/8	3/8	371PLPSP-6
1/2	1/2	371PLPSP-8

362PLPSP Plug-In Y



1 Tube size (in.)	2 Tube size (in.)	Part number
1/8	1/8	362PLPSP-2
5/32	5/32	362PLPSP-5/32
1/4	1/4	362PLPSP-4
5/16	5/16	362PLPSP-5
3/8	3/8	362PLPSP-6

67PLP Tube End Reducer



1 Tube size (in.)	2 Tube size (in.)	Part number
1/8	5/32	67PLP-2-5/32
1/8	3/16	67PLP-2-3
1/8	1/4	67PLP-2-4
5/32	3/16	67PLP-5/32-3
5/32	1/4	67PLP-5/32-4
5/32	5/16	67PLP-5/32-5
5/32	3/8	67PLP-5/32-6
3/16	5/16	67PLP-3-5
3/16	1/4	67PLP-3-4
1/4	5/16	67PLP-4-5
1/4	3/8	67PLP-4-6
1/4	1/2	67PLP-4-8
5/16	3/8	67PLP-5-6
5/16	1/2	67PLP-5-8
3/8	1/2	67PLP-6-8

32PLPSP Tube Expander



1 Tube size (in.)	2 Tube size (in.)	Part number
1/4	1/8	32PLPSP-4-2
1/4	6M	32PLPSP-4-6M
1/4	5/32	32PLPSP-4-5/32
1/4	3/16	32PLPSP-4-3
3/8	1/4	32PLPSP-6-4

322PLPSP Barbed Connector



OD 1	OD 2	OD 3	Part number
5/32	0.12	0.20	322PLPSP-2-5/32
5/32	0.20	0.28	322PLPSP-5M-5/32
1/4	3/16		322PLPSP-3-4
5/16	0.25	0.34	322PLPSP-4-5
3/8	0.32	0.39	322PLPSP-5-5
3/8	0.32	0.39	322PLPSP-5-6

63PLP Double Male Union



Tube size (in.)	Part number
5/32	63PLP-5/32
1/4	63PLP-4
5/16	63PLP-5
3/8	63PLP-6
1/2	63PLP-8

Most popular.



Parker Pneumatic

Push-to-Connect, Prestolok Composite

639PLP Plug



Tube size (in.)	Part number
1/8	639PLP-2
5/32	639PLP-5/32
3/16	639PLP-3
1/4	639PLP-4
5/16	639PLP-5
3/8	639PLP-6
1/2	639PLP-8

32PLP Union



Tube size (mm)	Part number
3	32PLP-3M
4	32PLP-4M
6	32PLP-6M
8	32PLP-8M
10	32PLP-10M
12	32PLP-12M
14	32PLP-14M

W369PLP Male Elbow



Tube size (mm)	Thread NPT	Part number
4	1/8	W369PLP-4M-2
4	1/4	W369PLP-4M-4
6	1/8	W369PLP-6M-2
6	1/4	W369PLP-6M-4
8	1/8	W369PLP-8M-2
8	1/4	W369PLP-8M-4
8	3/8	W369PLP-8M-6
10	1/4	W369PLP-10M-4
10	3/8	W369PLP-10M-6
10	1/2	W369PLP-10M-8
12	3/8	W369PLP-12M-6
12	1/2	W369PLP-12M-8

365PLP Union Elbow



Tube size (mm)	Part number
4	365PLP-4M
6	365PLP-6M
8	365PLP-8M
10	365PLP-10M
12	365PLP-12M
14	365PLP-14M

364PLP Union Tee



Tube size (mm)	Part number
3	364PLP-3M
4	364PLP-4M
6	364PLP-6M
8	364PLP-8M
10	364PLP-10M
12	364PLP-12M
14	364PLP-14M

W372PLP Male Branch Tee Swivel



Tube size (in.)	Thread NPT / UNF	Part number
1/8	10-32	372PLP-2-0
1/8	1/16	W372PLP-2-1
1/8	1/8	W372PLP-2-2
1/8	1/4	W372PLP-2-4
5/32	10-32	372PLP-5/32-0
5/32	1/8	W372PLP-5/32-2
5/32	1/4	W372PLP-5/32-4
3/16	1/8	W372PLP-3-2
1/4	1/8	W372PLP-4-2
1/4	1/4	W372PLP-4-4
1/4	3/8	W372PLP-4-6
5/16	1/8	W372PLP-5-2
5/16	1/4	W372PLP-5-4
5/16	3/8	W372PLP-5-6
3/8	1/8	W372PLP-6-2
3/8	1/4	W372PLP-6-4
3/8	3/8	W372PLP-6-6
3/8	1/2	W372PLP-6-8
1/2	1/4	W372PLP-8-4
1/2	3/8	W372PLP-8-6
1/2	1/2	W372PLP-8-8

362PLP Union Y Connector



1 Tube size (mm)	2 Tube size (mm)	Part number
4	4	362PLP-4M
6	6	362PLP-6M
8	8	362PLP-8M
10	10	362PLP-10M
12	12	362PLP-12M
4	6	362PLP-4M-6M
6	8	362PLP-6M-8M
8	10	362PLP-8M-10M
10	12	362PLP-10M-12M

362PLPD Double Y Connector



1 Tube size (mm)	2 Tube size (mm)	Part number
4	4	362PLPD-4M
6	6	362PLPD-6M
4	6	362PLPD-4M-6M
6	8	362PLPD-6M-8M

Most popular.

G	Accessories
	Ball / Plug Valves
Hose & Fittings	Integrated Fittings
	Misc. Accessories
Quick Couplings	
Tubing & Fittings	



Parker Pneumatic

Accessories

Push-to-Connect, Prestolok Composite

24PLP Multiple Tee



1 Tube size (mm)	2 Tube size (mm)	Part number
6	4	24PLP-6M-4M
8	4	24PLP-8M-4M
8	6	24PLP-8M-6M
10	6	24PLP-10M-6M
10	8	24PLP-10M-8M

365PLPBH Equal Bulkhead Elbow



Tube size (mm)	Part number
4	365PLPBH-4M
6	365PLPBH-6M
8	365PLPBH-8M
10	365PLPBH-10M
12	365PLPBH-12M

24PLPD Double Multiple Tee



1 Tube size (mm)	2 Tube size (mm)	Part number
6	4	24PLPD-6M-4M
8	4	24PLPD-8M-4M
8	6	24PLPD-8M-6M
10	6	24PLPD-10M-6M
10	8	24PLPD-10M-8M

370PLP Female Elbow - BSPP



Tube size (mm)	BSPP	Part number
4	1/8	370PLP-4M-2G
4	1/4	370PLP-4M-4G
6	1/8	370PLP-6M-2G
6	1/4	370PLP-6M-4G
8	1/8	370PLP-8M-2G
8	1/4	370PLP-8M-4G
8	3/8	370PLP-8M-6G
10	1/4	370PLP-10M-4G
10	3/8	370PLP-10M-6G
10	1/2	370PLP-10M-8G
12	1/4	370PLP-12M-4G
12	3/8	370PLP-12M-6G
12	1/2	370PLP-12M-8G

347PLP Equal Cross



Tube size (mm)	Part number
4	347PLP-4M
6	347PLP-6M
8	347PLP-8M

32PLPRC Connector for 2 Tubes



Tube size (mm)	Part number
4	32PLPRC-4M
6	32PLPRC-6M
8	32PLPRC-8M

32PLPDRC Connector for 3 Tubes



Tube size (mm)	Part number
4	32PLPDRC-4M
6	32PLPDRC-6M
8	32PLPDRC-8M

32PLPBH Bulkhead Union



Tube size (mm)	Part number
4	32PLPBH-4M
6	32PLPBH-6M
8	32PLPBH-8M
10	32PLPBH-10M
12	32PLPBH-12M
14	32PLPBH-14M

Most popular.

G

Accessories

Ball / Plug Valves

Hose & Fittings

Integrated Fittings

Misc. Accessories

Quick Couplings

Tubing & Fittings



369PLP Male Elbow - BSPP



Tube size (mm)	BSPP	Part number
3	M3x0.5	369PLP-3M-M3
3	M5x0.8	369PLP-3M-M5
4	M3x0.5	369PLP-4M-M3
4	M5x0.8	369PLP-4M-M5
4	M7x1	369PLP-4M-M7
4	1/8	369PLP-4M-2G
4	1/4	369PLP-4M-4G
6	M5x0.8	369PLP-6M-M5
6	M7x1	369PLP-6M-M7
6	M10x1	369PLP-6M-M10
6	M12x1.5	369PLP-6M-M12
6	1/8	369PLP-6M-2G
6	1/4	369PLP-6M-4G
6	3/8	369PLP-6M-6G
6	1/2	369PLP-6M-8G
8	M10x1	369PLP-8M-M10
8	M12x1.5	369PLP-8M-M12
8	1/8	369PLP-8M-2G
8	1/4	369PLP-8M-4G
8	3/8	369PLP-8M-6G
8	1/2	369PLP-8M-8G
10	1/4	369PLP-10M-4G
10	3/8	369PLP-10M-6G
10	1/2	369PLP-10M-8G
12	1/4	369PLP-12M-4G
12	3/8	369PLP-12M-6G
12	1/2	369PLP-12M-8G
14	3/8	369PLP-14M-6G
14	1/2	369PLP-14M-8G

369PLPX Male Elbow - BSPP



Tube size (mm)	BSPP	Part number
4	M5x0.8	369PLPX-4M-M5
4	M7x1	369PLPX-4M-M7
4	1/8	369PLPX-4M-2G
4	1/4	369PLPX-4M-4G
6	M5x0.8	369PLPX-6M-M5
6	M7x1	369PLPX-6M-M7
6	1/8	369PLPX-6M-2G
6	1/4	369PLPX-6M-4G
8	1/8	369PLPX-8M-2G
8	1/4	369PLPX-8M-4G
8	3/8	369PLPX-8M-6G
10	1/4	369PLPX-10M-4G
10	3/8	369PLPX-10M-6G
10	1/2	369PLPX-10M-8G
12	1/4	369PLPX-12M-4G
12	3/8	369PLPX-12M-6G
12	1/2	369PLPX-12M-8G
14	3/8	369PLPX-14M-6G
14	1/2	369PLPX-14M-8G

372PLP Male Branch Tee - BSPP



Tube size (mm)	BSPP / M5	Part number
4	M5x0.8	372PLP-4M-M5
4	1/8	372PLP-4M-2G
4	1/4	372PLP-4M-4G
6	M5x0.8	372PLP-6M-M5
6	1/8	372PLP-6M-2G
6	1/4	372PLP-6M-4G
8	1/8	372PLP-8M-2G
8	1/4	372PLP-8M-4G
8	3/8	372PLP-8M-6G
10	1/4	372PLP-10M-4G
10	3/8	372PLP-10M-6G
10	1/2	372PLP-10M-8G
12	1/4	372PLP-12M-4G
12	3/8	372PLP-12M-6G
12	1/2	372PLP-12M-8G
14	3/8	372PLP-14M-6G
14	1/2	372PLP-14M-8G

379PLP 45° Male Elbow - BSPP



Tube size (mm)	BSPP / M5	Part number
4	M5x0.8	379PLP-4M-M5
4	1/8	379PLP-4M-2G
6	M5x0.8	379PLP-6M-M5
6	1/8	379PLP-6M-2G
6	1/4	379PLP-6M-4G
8	1/8	379PLP-8M-2G
8	1/4	379PLP-8M-4G
8	3/8	379PLP-8M-6G
10	1/4	379PLP-10M-4G
10	3/8	379PLP-10M-6G
10	1/2	379PLP-10M-8G
12	1/4	379PLP-12M-4G
12	3/8	379PLP-12M-6G
12	1/2	379PLP-12M-8G

Most popular.

G
 Accessories
 Ball / Plug Valves
 Hose & Fittings
 Integrated Fittings
 Misc. Accessories
 Quick Couplings
 Tubing & Fittings



Parker Pneumatic

Accessories

Push-to-Connect, Prestolok Composite

371PLP Male Run Tee - BSPP



Tube size (mm)	BSPP	Part number
4	M5x0.8	371PLP-4M-M5
4	1/8	371PLP-4M-2G
4	1/4	371PLP-4M-4G
6	M5x0.8	371PLP-6M-M5
6	1/8	371PLP-6M-2G
6	1/4	371PLP-6M-4G
8	1/8	371PLP-8M-2G
8	1/4	371PLP-8M-4G
8	3/8	371PLP-8M-6G
10	1/4	371PLP-10M-4G
10	3/8	371PLP-10M-6G
10	1/2	371PLP-10M-8G
12	1/4	371PLP-12M-4G
12	3/8	371PLP-12M-6G
12	1/2	371PLP-12M-8G
14	3/8	371PLP-14M-6G
14	1/2	371PLP-14M-8G

368PLP Male Y Connector - BSPP



Tube size (mm)	BSPP / M5	Part number
4	M5x0.8	368PLP-4M-M5
4	1/8	368PLP-4M-2G
4	1/4	368PLP-4M-4G
6	M5x0.8	368PLP-6M-M5
6	1/8	368PLP-6M-2G
6	1/4	368PLP-6M-4G
8	1/8	368PLP-8M-2G
8	1/4	368PLP-8M-4G
8	3/8	368PLP-8M-6G
10	1/4	368PLP-10M-4G
10	3/8	368PLP-10M-6G
10	1/2	368PLP-10M-8G
12	3/8	368PLP-12M-6G
12	1/2	368PLP-12M-8G

68PLPSP Male Standpipe - BSPP



Tube size (mm)	BSPT	Part number
4	M5x0.8	68PLPSP-4M-M5
4	1/8	68PLPSP-4M-2G
4	1/4	68PLPSP-4M-4G
6	1/8	68PLPSP-6M-2G
6	1/4	68PLPSP-6M-4G
8	1/8	68PLPSP-8M-2G
8	1/4	68PLPSP-8M-4G
8	3/8	68PLPSP-8M-6G
10	1/4	68PLPSP-10M-4G
10	3/8	68PLPSP-10M-6G
10	1/2	68PLPSP-10M-8G
12	3/8	68PLPSP-12M-6G
12	1/2	68PLPSP-12M-8G
14	3/8	68PLPSP-14M-6G
14	1/2	68PLPSP-14M-8G

368PLPD Double Y Male Connector - BSPP



Tube size (mm)	BSPP	Part number
4	1/8	368PLPD-4M-2G
4	1/4	368PLPD-4M-4G
6	1/8	368PLPD-6M-2G
6	1/4	368PLPD-6M-4G

369PLPSP Plug-In Elbow



1 Tube size (mm)	2 Tube size (mm)	Part number
4	4	369PLPSP-4M
6	6	369PLPSP-6M
8	8	369PLPSP-8M
10	10	369PLPSP-10M
12	12	369PLPSP-12M
4	6	369PLPSP-4M-6M
6	4	369PLPSP-6M-4M
6	8	369PLPSP-6M-8M
8	10	369PLPSP-8M-10M
10	12	369PLPSP-10M-12M

Most popular.



Parker Pneumatic

Accessories

Push-to-Connect, Prestolok Composite

369PLXSP Extended Plug-In Elbow



1 Tube size (mm)	2 Tube size (mm)	Part number
4	4	369PLXSP-4M
6	6	369PLXSP-6M
8	8	369PLXSP-8M
10	10	369PLXSP-10M
12	12	369PLXSP-12M
4	6	369PLXSP-4M-6M
6	8	369PLXSP-6M-8M
8	10	369PLXSP-8M-10M
10	12	369PLXSP-10M-12M

362PLPSP Plug-In Y



1 Tube size (mm)	2 Tube size (mm)	Part number
4	4	362PLPSP-4M
6	6	362PLPSP-6M
8	8	362PLPSP-8M
10	10	362PLPSP-10M
12	12	362PLPSP-12M
4	6	362PLPSP-4M-6M
6	8	362PLPSP-6M-8M
8	10	362PLPSP-8M-10M
10	12	362PLPSP-10M-12M

379PLPSP 45° Plug-In Elbow



1 Tube size (mm)	2 Tube size (mm)	Part number
4	4	379PLPSP-4M
6	6	379PLPSP-6M
8	8	379PLPSP-8M
10	10	379PLPSP-10M
12	12	379PLPSP-12M

362PLPDSP Plug-In Multiple Y



1 Tube size (mm)	2 Tube size (mm)	Part number
6	4	362PLPDSP-6M-4M
8	4	362PLPDSP-8M-4M
8	6	362PLPDSP-8M-6M

372PLPSP Plug-In Branch Tee



1 Tube size (mm)	2 Tube size (mm)	Part number
4	4	372PLPSP-4M
6	6	372PLPSP-6M
8	8	372PLPSP-8M
10	10	372PLPSP-10M
12	12	372PLPSP-12M
4	6	372PLPSP-4M-6M
6	8	372PLPSP-6M-8M
8	10	372PLPSP-8M-10M
10	12	372PLPSP-10M-12M

67PLP Tube Reducer



1 Tube size (mm)	2 Tube size (mm)	Part number
6	4	67PLP-6M-4M
8	4	67PLP-8M-4M
8	6	67PLP-8M-6M
10	4	67PLP-10M-4M
10	6	67PLP-10M-6M
10	8	67PLP-10M-8M
12	10	67PLP-12M-10M
12	6	67PLP-12M-6M
12	8	67PLP-12M-8M
14	10	67PLP-14M-10M
14	12	67PLP-14M-12M
14	6	67PLP-14M-6M
14	8	67PLP-14M-8M

371PLPSP Plug-In Run Tee



1 Tube size (mm)	2 Tube size (mm)	Part number
4	4	371PLPSP-4M
6	6	371PLPSP-6M
8	8	371PLPSP-8M
10	10	371PLPSP-10M
12	12	371PLPSP-12M
4	6	371PLPSP-4M-6M
6	8	371PLPSP-6M-8M
8	10	371PLPSP-8M-10M
10	12	371PLPSP-10M-12M

32PLPSP Tube Expander



1 Tube size (mm)	2 Tube size (mm)	Part number
6	4	32PLPSP-6M-4M
8	6	32PLPSP-8M-6M
10	8	32PLPSP-10M-8M
12	10	32PLPSP-12M-10M

Most popular.

G

Accessories

Ball / Plug Valves

Hose & Fittings

Integrated Fittings

Misc. Accessories

Quick Couplings

Tubing & Fittings



Parker Pneumatic

Push-to-Connect, Prestolok Metal

322PLPSP Barbed Connector



OD 1	OD 2	OD 3	Part number
4	3.2	5.0	322PLPSP-3M-4M
4	5.0	7.0	322PLPSP-5M-4M
6	5.0	7.0	322PLPSP-5M-6M
8	6.3	8.5	322PLPSP-6M-8M
8	8.0	10.0	322PLPSP-8M-8M
10	6.3	8.0	322PLPSP-6M-10M
10	8.0	10.0	322PLPSP-8M-10M
12	8.0	10.0	322PLPSP-8M-12M
12	10.0	12.0	322PLPSP-1012M
12	12.5	14.5	322PLPSP-1212M
14	12.5	14.5	322PLPSP-1214M
14	14.0	16.0	322PLPSP-1414M

Push-to-Connect, Prestolok Metal

W68PLP Male Connector



Tube size (in.)	Pipe thd (NPTF)	Part number
1/8	1/16	W68PLP-2-1
1/8	1/8	W68PLP-2-2
1/8	1/4	W68PLP-2-4
3/16	1/8	W68PLP-3-2
3/16	1/4	W68PLP-3-4
5/32	1/16	W68PLP-5/32-1
5/32	1/8	W68PLP-5/32-2
5/32	1/4	W68PLP-5/32-4
1/4	1/16	W68PLP-4-1
1/4	1/8	W68PLP-4-2
1/4	1/4	W68PLP-4-4
1/4	3/8	W68PLP-4-6
5/16	1/8	W68PLP-5-2
5/16	1/4	W68PLP-5-4
5/16	3/8	W68PLP-5-6
3/8	1/8	W68PLP-6-2
3/8	1/4	W68PLP-6-4
3/8	3/8	W68PLP-6-6
3/8	1/2	W68PLP-6-8
1/2	1/4	W68PLP-8-4
1/2	3/8	W68PLP-8-6
1/2	1/2	W68PLP-8-8
5/32	1/4-28	68PLP-5/32-4LT*

*SAE-LT Threads

Most popular.

W68PLPR Round Body Male Connector



Tube size (in.)	Thread size NPTF	Part number
5/32	1/16	W68PLPR-5/32-1
5/32	1/8	W68PLPR-5/32-2
1/4	1/16	W68PLPR-4-1
1/4	1/8	W68PLPR-4-2
1/4	1/4	W68PLPR-4-4

*10-32 seal is neoprene

W68PW Male Connector (Nickel Plated)



Tube size (in.)	Thread size NPTF	Part number
1/4	1/8	W68PW-4-2
1/4	1/4	W68PW-4-4
1/4	3/8	W68PW-4-6
5/16	1/8	W68PW-5-2
5/16	1/4	W68PW-5-4
5/16	3/8	W68PW-5-6
3/8	1/8	W68PW-6-2
3/8	1/4	W68PW-6-4
3/8	3/8	W68PW-6-6
3/8	1/2	W68PW-6-8
1/2	1/4	W68PW-8-4
1/2	3/8	W68PW-8-6
1/2	1/2	W68PW-8-8

G

Accessories

Ball / Plug Valves

Hose & Fittings

Integrated Fittings

Misc. Accessories

Quick Couplings

Tubing & Fittings



Parker Pneumatic

Push-to-Connect, Prestolok Metal

W169PLP Male Elbow Swivel 90°

Tube size (in.)	Pipe thread (NPTF)	Part number
1/8	1/16	W169PLP-2-1
1/8	1/8	W169PLP-2-2
1/8	10-32	169PLP-2-0*
1/8	1/4	W169PLP-2-4
3/16	1/8	W169PLP-3-2
5/32	1/16	W169PLP-5/32-1
5/32	1/8	W169PLP-5/32-2
5/32	1/4	W169PLP-5/32-4
5/32	10-32	169PLP-5/32-0*
1/4	1/16	W169PLP-4-1
1/4	1/8	W169PLP-4-2
1/4	1/4	W169PLP-4-4
1/4	3/8	W169PLP-4-6
1/4	10-32	169PLP-4-0*
5/16	1/8	W169PLP-5-2
5/16	1/4	W169PLP-5-4
3/8	1/8	W169PLP-6-2
3/8	1/4	W169PLP-6-4
3/8	3/8	W169PLP-6-6
3/8	1/2	W169PLP-6-8
1/2	1/4	W169PLP-8-4
1/2	3/8	W169PLP-8-6
1/2	1/2	W169PLP-8-8



*10-32 seal is neoprene

W169PLPNS Male Elbow 90°

Tube size (in.)	Pipe thread (NPTF)	Part number
1/8	1/8	W169PLPNS-2-2
5/32	1/8	W169PLPNS5/32-2
5/32	1/4	W169PLPNS5/32-4
1/4	1/8	W169PLPNS-4-2
1/4	1/4	W169PLPNS-4-4
5/16	1/8	W169PLPNS-5-2
5/16	1/4	W169PLPNS-5-4
3/8	1/4	W169PLPNS-6-4
3/8	3/8	W169PLPNS-6-6
3/8	1/2	W169PLPNS-6-8
1/2	3/8	W169PLPNS-8-6
1/2	1/2	W169PLPNS-8-8
5/32	1/4-28	169PLPNS532-4LT*



* SAE-LT Threads

Most popular.

W169PW Male Elbow Swivel 90° (Nickel Plated)

Tube size (in.)	Thread (NPTF)	Part number
1/4	1/8	W169PW-4-2
1/4	1/4	W169PW-4-4
1/4	3/8	W169PW-4-6
5/16	1/8	W169PW-5-2
5/16	1/4	W169PW-5-4
3/8	1/8	W169PW-6-2
3/8	1/4	W169PW-6-4
3/8	3/8	W169PW-6-6
3/8	1/2	W169PW-6-8
1/2	1/4	W169PW-8-4
1/2	3/8	W169PW-8-6
1/2	1/2	W169PW-8-8



W171PLP Male Run Tee Swivel

Tube size (in.)	Pipe thread (NPTF)	Part number
1/8	1/8	W171PLP-2-2
5/32	1/8	W171PLP-5/32-2
1/4	1/8	W171PLP-4-2
1/4	1/4	W171PLP-4-4
1/4	3/8	W171PLP-4-6
5/16	1/8	W171PLP-5-2
5/16	1/4	W171PLP-5-4
3/8	1/4	W171PLP-6-4
3/8	3/8	W171PLP-6-6
1/2	3/8	W171PLP-8-6
1/2	1/2	W171PLP-8-8



W171PW Male Run Tee Swivel (Nickel Plated)

Tube size (in.)	Pipe thread (NPTF)	Part number
1/4	1/8	W171PW-4-2
1/4	1/4	W171PW-4-4
1/4	3/8	W171PW-4-6
5/16	1/8	W171PW-5-2
5/16	1/4	W171PW-5-4
3/8	1/4	W171PW-6-4
3/8	3/8	W171PW-6-6
1/2	3/8	W171PW-8-6
1/2	1/2	W171PW-8-8



G
 Accessories
 Ball / Plug Valves
 Hose & Fittings
 Integrated Fittings
 Misc. Accessories
 Quick Couplings
 Tubing & Fittings



Parker Pneumatic

Push-to-Connect, Prestolok Metal

W172PLP Male Branch Tee Swivel



Tube size (in.)	Pipe thread (NPTF)	Part number
1/8	1/8	W172PLP-2-2
3/16	1/8	W172PLP-3-2
5/32	1/8	W172PLP-5/32-2
1/4	1/8	W172PLP-4-2
1/4	1/4	W172PLP-4-4
1/4	3/8	W172PLP-4-6
5/16	1/8	W172PLP-5-2
5/16	1/4	W172PLP-5-4
3/8	1/4	W172PLP-6-4
3/8	3/8	W172PLP-6-6
1/2	1/4	W172PLP-8-4
1/2	3/8	W172PLP-8-6
1/2	1/2	W172PLP-8-8

W172PW Male Branch Tee Swivel (Nickel Plated)



Tube size (in.)	Thread (NPTF)	Part number
1/4	1/8	W172PW-4-2
1/4	1/4	W172PW-4-4
1/4	3/8	W172PW-4-6
5/16	1/8	W172PW-5-2
5/16	1/4	W172PW-5-4
3/8	1/4	W172PW-6-4
3/8	3/8	W172PW-6-6
1/2	1/4	W172PW-8-4
1/2	3/8	W172PW-8-6
1/2	1/2	W172PW-8-8

62PLP Union



Tube size (in.)	Part number
1/8	62PLP-2
3/16	62PLP-3
5/32	62PLP-5/32
1/4	62PLP-4
5/16	62PLP-5
3/8	62PLP-6
1/2	62PLP-8

62PW Union (Nickel Plated)



Tube size (in.)	Part number
1/4	62PW-4
5/16	62PW-5
3/8	62PW-6
1/2	62PW-8

Most popular.

164PLP Union Tee



Tube size (in.)	Part number
1/8	164PLP-2
3/16	164PLP-3
5/32	164PLP-5/32
1/4	164PLP-4
5/16	164PLP-5
3/8	164PLP-6
1/2	164PLP-8

164PW Union Tee (Nickel Plated)



Tube size (in.)	Part number
1/4	164PW-4
5/16	164PW-5
3/8	164PW-6
1/2	164PW-8

165PLP Union Elbow



Tube size (in.)	Part number
1/8	165PLP-2
5/32	165PLP-5/32
3/16	165PLP-3
1/4	165PLP-4
5/16	165PLP-5
3/8	165PLP-6
1/2	165PLP-8

165PW Union Elbow (Nickel Plated)



Tube size (in.)	Part number
1/4	165PW-4
5/16	165PW-5
3/8	165PW-6
1/2	165PW-8

G

Accessories

Ball / Plug Valves

Hose & Fittings

Integrated Fittings

Misc. Accessories

Quick Couplings

Tubing & Fittings



Parker Pneumatic

Accessories

Push-to-Connect, Prestolok Metal

66PLP Female Connector



Tube size (in.)	Pipe thread (NPTF)	Part number
1/8	1/8	66PLP-2-2
1/8	1/4	66PLP-2-4
3/16	1/8	66PLP-3-2
5/32	1/8	66PLP-5/32-2
5/32	1/4	66PLP-5/32-4
1/4	1/8	66PLP-4-2
1/4	1/4	66PLP-4-4
5/16	1/8	66PLP-5-2
5/16	1/4	66PLP-5-4
3/8	1/4	66PLP-6-4
3/8	3/8	66PLP-6-6

62PWBH Bulkhead Union (Nickel Plated)



Tube Size (in.)	Bulkhead Hole Dia. B	Part number
1/4	9/16	62PWBH-4
5/16	5/8	62PWBH-5
3/8	3/4	62PWBH-6
1/2	7/8	62PWBH-8

66PWBH Female Bulkhead (Nickel Plated)



Tube size (in.)	Thread (NPTF)	Bulkhead hole dia.	Part number
1/4	1/4	9/16	66PWBH-4-4
3/8	3/8	7/8	66PWBH-6-6
1/2	3/8	1	66PWBH-8-6

66PW Female Connector (Nickel Plated)



Tube size (in.)	Pipe thread (NPTF)	Part number
1/4	1/8	66PW-4-2
1/4	1/4	66PW-4-4
5/16	1/8	66PW-5-2
5/16	1/4	66PW-5-4
3/8	1/4	66PW-6-4
3/8	3/8	66PW-6-6

PLPHBF4-B Male Connector BSPP



Tube size (in.)	Pipe thd BSPP	Part number
3/16	1/8-28	3-1/8PLPHBF4-B
3/16	1/4-19	3-1/4PLPHBF4-B
1/4	1/8-28	4-1/8PLPHBF4-B
1/4	1/4-19	4-1/4PLPHBF4-B
1/4	3/8-19	4-3/8PLPHBF4-B
3/8	1/4-19	6-1/4PLPHBF4-B
3/8	3/8-19	6-3/8PLPHBF4-B
3/8	1/2-14	6-1/2PLPHBF4-B
1/2	3/8-19	8-3/8PLPHBF4-B
1/2	1/2-14	8-1/2PLPHBF4-B

62PLPBH Bulkhead Union



Tube size (in.)	Part number
1/8	62PLPBH-2
5/32	62PLPBH-5/32
1/4	62PLPBH-4
5/16	62PLPBH-5
3/8	62PLPBH-6
1/2	62PLPBH-8

DB Dust / Weld Spatter Boot



Tube size (in.)	Part number
1/4	DB-4
3/8	DB-6
1/2	DB-8

66PLPBH Female Bulkhead



Tube size (in.)	Pipe thd (NPTF)	Part number
5/32	1/4	66PLPBH-5/32-4
1/4	1/4	66PLPBH-4-4
3/8	3/8	66PLPBH-6-6
1/2	3/8	66PLPBH-8-6

Most popular.

G
 Accessories
 Ball / Plug Valves
 Hose & Fittings
 Integrated Fittings
 Misc. Accessories
 Quick Couplings
 Tubing & Fittings



Parker Pneumatic

Accessories

Push-to-Connect, Prestolok Metal

FPB Male Connector NPT



Tube size (mm)	NPT	Part number
4	1/8-27	W68PLP-5/32-2
4	1/4-18	W68PLP-5/32-4
6	1/8-27	FPB6-1/8
6	1/4-18	FPB6-1/4
10	1/4-18	FPB10-1/4
10	3/8-18	FPB10-3/8
12	3/8-18	FPB12-3/8

WBMPB Mixed Bulkhead Union



Tube 1 size (mm)	Tube 2 size (mm)	Bulkhead hole dia.	Part number
4	4	8mm	WBMPB4
6	6	10mm	WBMPB6
8	8	12mm	WBMPB8
10	10	14mm	WBMPB10
12	12	16mm	WBMPB12
14	14	18mm	WBMPB14

C6PB Adjustable Male Elbow NPT



Tube size (mm)	NPT	Part number
6	1/4-18	C6PB6-1/4
6	3/8-18	C6PB6-3/8
10	1/4-18	C6PB10-1/4
10	3/8-18	C6PB10-3/8
12	1/2-14	C6PB12-1/2

WPB Bulkhead Union



Tube Size (mm)	Bulkhead hole dia.	Part number
4	11mm	WPB4
6	13mm	WPB6
8	16mm	WPB8
10	18mm	WPB10
12	23mm	WPB12
14	24mm	WPB14

Jam nut is supplied loose in box

HPB Equal Union



Tube size (mm)	Part number
4	HPB4
5	HPB5
6	HPB6
8	HPB8
10	HPB10
12	HPB12
14	HPB14

WE6PB Adjustable Bulkhead Union Elbow



Tube Size (mm)	Bulkhead hole dia.	Part number
4	11mm	WE6PB4
6	13mm	WE6PB6
8	15mm	WE6PB8
10	18mm	WE6PB10
12	23mm	WE6PB12

JPB Union Tee



Tube size (mm)	Part number
4	JPB4
5	JPB5
6	JPB6
8	JPB8
10	JPB10
12	JPB12
14	JPB14

G4PB Female Connector BSPP



Tube size (mm)	BSPP	Part number
4	1/8	G4PB4-1/8
6	1/8	G4PB6-1/8
6	1/4	G4PB6-1/4
8	1/8	G4PB8-1/8
8	1/4	G4PB8-1/4

EPB 90° Union Elbow



Tube size (mm)	Part number
4	EPB4
5	EPB5
6	EPB6
8	EPB8
10	EPB10
12	EPB12
14	EPB14

Most popular.

G

Accessories

Ball / Plug Valves

Hose & Fittings

Integrated Fittings

Misc. Accessories

Quick Couplings

Tubing & Fittings



Parker Pneumatic

Accessories

Push-to-Connect, Prestolok Metal

WG4PB Bulkhead Union Female BSPP



Tube size (mm)	BSPP	Part number
4	G1/8	WG4PB4-1/8
6	G1/8	WG4PB6-1/8
6	G1/4	WG4PB6-1/4
8	G1/8	WG4PB8-1/8
8	G1/4	WG4PB8-1/4
10	G3/8	WG4PB10-3/8
12	G3/8	WG4PB12-3/8
12	G1/2	WG4PB12-1/2

F4PB Compact Male Connector BSPP



Tube size (mm)	BSPP	Part number
4	1/8	F4PB4-1/8
4	1/4	F4PB4-1/4
6	1/8	F4PB6-1/8
6	1/4	F4PB6-1/4
8	1/4	F4PB8-1/4
8	1/8	F4PB8-1/8
8	3/8	F4PB8-3/8
10	1/4	F4PB10-1/4
10	3/8	F4PB10-3/8
10	1/2	F4PB10-1/2
12	1/4	F4PB12-1/4
12	3/8	F4PB12-3/8
12	1/2	F4PB12-1/2
14	3/8	F4PB14-3/8
14	1/2	F4PB14-1/2

C64PB Adjustable Male Elbow BSPP



Tube size (mm)	BSPP	Part number
4	1/8	C64PB4-1/8
4	1/4	C64PB4-1/4
6	1/8	C64PB6-1/8
6	1/4	C64PB6-1/4
8	1/8	C64PB8-1/8
8	1/4	C64PB8-1/4
8	3/8	C64PB8-3/8
10	1/4	C64PB10-1/4
10	3/8	C64PB10-3/8
12	1/4	C64PB12-1/4
12	3/8	C64PB12-3/8
12	1/2	C64PB12-1/2
14	3/8	C64PB14-3/8
14	1/2	C64PB14-1/2

R64PB Swivel Male Branch Run Tee BSPP



Tube size (mm)	BSPP	Part number
4	1/8	R64PB4-1/8
4	1/4	R64PB4-1/4
6	1/8	R64PB6-1/8
6	1/4	R64PB6-1/4
8	1/8	R64PB8-1/8
8	1/4	R64PB8-1/4
8	3/8	R64PB8-3/8
10	1/4	R64PB10-1/4
10	3/8	R64PB10-3/8
12	1/4	R64PB12-1/4
12	3/8	R64PB12-3/8
14	3/8	R64PB14-3/8
14	1/2	R64PB14-1/2

C64SPB Compact Adjustable Male Elbow BSPP



Tube size (mm)	BSPP	Part number
4	1/8	C64SPB4-1/8
6	1/8	C64SPB6-1/8
6	1/4	C64SPB6-1/4
8	1/8	C64SPB8-1/8
8	1/4	C64SPB8-1/4
8	3/8	C64SPB8-3/8
10	1/4	C64SPB10-1/4
10	3/8	C64SPB10-3/8
12	1/8	C64SPB12-1/4
12	3/8	C64SPB12-3/8
12	1/2	C64SPB12-1/2

Most popular.

G

Accessories

Ball / Plug Valves

Hose & Fittings

Integrated Fittings

Misc. Accessories

Quick Couplings

Tubing & Fittings



Parker Pneumatic

Push-to-Connect, Prestolok Metal

S64PB Swivel Male Branch Tee BSPP



Tube size (mm)	BSPP	Part number
4	1/8	S64PB4-1/8
4	1/4	S64PB4-1/4
6	1/8	S64PB6-1/8
6	1/4	S64PB6-1/4
8	1/8	S64PB8-1/8
8	1/4	S64PB8-1/4
8	3/8	S64PB8-3/8
10	1/4	S64PB10-1/4
10	3/8	S64PB10-3/8
12	1/4	S64PB12-1/4
12	3/8	S64PB12-3/8
14	3/8	S64PB14-3/8
14	1/2	S64PB14-1/2

R68PB Adjustable Male Run Tee Metric Straight Thread



Tube size (mm)	Thread (mm)	Part number
4	M3x0.5	R68PB4M3
4	M5x0.8	R68PB4M5
6	M5x0.8	R68PB6M5

S68PB Adjustable Male Branch Tee Metric Straight Thread



Tube size (mm)	Thread (mm)	Part number
4	M3x0.5	S68PB4M3
4	M5x0.8	S68PB4M5
6	M5x0.8	S68PB6M5

C68PB Adjustable Male Elbow Metric Straight Thread



Tube size (mm)	Thread (mm)	Part number
4	M5x0.8	C68PB4M5
6	M5x0.8	C68PB6M5

FNPB Plug



Tube size (mm)	Part number
4	FNPB4
6	FNPB6
8	FNPB8
10	FNPB10
12	FNPB12
14	FNPB14

C68SPB Compact Adjustable Male Elbow Metric Straight Thread



Tube size (mm)	Thread (mm)	Part number
4	M5x0.8	C68SPB4M5
6	M5x0.8	C68SPB6M5

TEPB Tube End Expander



Tube 1 Size (mm)	Tube 2 Size (mm)	Part number
4	6	TEPB4-6

F28PB Male Connector Metric Straight Thread



Tube size (mm)	Thread (mm)	Part number
4	M3x0.5	F28PB4M3
4	M5x0.8	F28PB4M5
6	M5x0.8	F28PB6M5

TRPB Tube End Reducer



Tube 1 size (mm)	Tube 2 size (mm)	Part number
6	4	TRPB6-4
8	4	TRPB8-4
8	6	TRPB8-6
10	4	TRPB10-4
10	6	TRPB10-6
10	8	TRPB10-8
12	6	TRPB12-6
12	8	TRPB12-8
12	10	TRPB12-10
14	8	TRPB14-8
14	10	TRPB14-10
14	12	TRPB14-12

This fitting has been designed for use where space is at a premium. It is assembled using the internal hexagon and an allen key.

F8PB Male Connector Metric Straight Thread



Tube size (mm)	Thread (mm)	Part number
4	M5x0.8	F8PB4M5
4	M10x1	F8PB4M10
6	M5x0.8	F8PB6M5
6	M10x1	F8PB6M10
6	M12x1.5	F8PB6M12
8	M12x1.5	F8PB8M12
8	M16x1.5	F8PB8M16
8	M22x1.5	F8PB8M22

Most popular.

G

Accessories

Ball / Plug Valves

Hose & Fittings

Integrated Fittings

Misc. Accessories

Quick Couplings

Tubing & Fittings



Parker Pneumatic

**Accessories
 Pipe Fittings**

207ACBH Anchor Coupling



Female pipe thread	Straight thread	Max. bulkhead	Part number
1/8	5/8-18	.89	207ACBH-2
1/8	5/8-18	.35	207ACBHS-2
1/4	3/4-16	.81	207ACBH-4
1/4	3/4-16	.26	207ACBHS-4
3/8	1-14	.62	207ACBH-6
1/2	1-1/8-14	.75	207ACBH-8
3/4	1-5/16-12	.65	207ACBH-12
1	1-5/8-14	1.00	207ACBH-16*

*Lock washer not available

207P Coupling



Pipe thread	C Hex	Part number
1/8	9/16	207P-2
1/4	3/4	207P-4
3/8	7/8	207P-6
1/2	1-1/16	207P-8
3/4	1-3/8	207P-12

208P Reducer Coupling



1 Pipe thread	2 Pipe thread	C Hex	Part number
1/4	1/8	3/4	208P-4-2
3/8	1/4	7/8	208P-6-4
1/2	1/4	1-1/16	208P-8-4
1/2	3/8	1-1/16	208P-8-6
3/4	3/8	1-3/8	208P-12-6
3/4	1/2	1-3/8	208P-12-8

209P Bushing



1 Pipe thread	2 Pipe thread	C Hex	Part number
1/8	1/4	9/16	209P-4-2
1/8	3/8	11/16	209P-6-2
1/4	3/8	3/4	209P-6-4
1/8	1/2	7/8	209P-8-2
1/4	1/2	7/8	209P-8-4
3/8	1/2	7/8	209P-8-6
1/8	3/4	1-1/8	209P-12-2
1/4	3/4	1-1/8	209P-12-4
3/8	3/4	1-1/8	209P-12-6
1/2	3/4	1-1/8	209P-12-8
1/2	1	1-3/8	209P-16-8
3/4	1	1-3/8	209P-16-12

Most popular.

210P Lock Nut



Pipe thread	C Hex	Part number
1/8 NPSL	11/16	210P-2
1/4 NPSL	7/8	210P-4
3/8 NPSL	1	210P-6
1/2 NPSL	1-1/8	210P-8

211P Square-Head Plug



Pipe thread	Part number
1/8	211P-2
1/4	211P-4
3/8	211P-6
1/2	211P-8
3/4	211P-12

212P Union



Pipe thread	C Hex	Part number
1/4	1-3/16	212P-4
3/8	1-1/4	212P-6

213P Cap



Pipe thread	C Hex	Part number
1/8	9/16	213P-2
1/4	11/16	213P-4
3/8	13/16	213P-6
1/2	1-1/16	213P-8
3/4	1-1/4	213P-12

215PN Close Nipple



Pipe thread	Part number
1/8	215PN-2
1/4	215PN-4
3/8	215PN-6
1/2	215PN-8
3/4	215PN-12

G
 Accessories
 Ball / Plug Valves
 Hose & Fittings
 Integrated Fittings
 Misc. Accessories
 Quick Couplings
 Tubing & Fittings



Parker Pneumatic

**Accessories
 Pipe Fittings**

215PNL Long Nipple

Pipe thread	Part number
1/8	215PNL-2-15
1/4	215PNL-4-15
3/8	215PNL-6-15
1/2	215PNL-8-15
1/8	215PNL-2-20
1/4	215PNL-4-20
3/8	215PNL-6-20
1/2	215PNL-8-20
1/8	215PNL-2-25
1/4	215PNL-4-25
3/8	215PNL-6-25
1/2	215PNL-8-25
1/8	215PNL-2-30
1/4	215PNL-4-30
3/8	215PNL-6-30
1/2	215PNL-8-30
1/8	215PNL-2-35
1/4	215PNL-4-35
3/8	215PNL-6-35
1/2	215PNL-8-35



220P Slotted-Head Plug

Pipe thread	Part number
1/8	220P-2
1/4	220P-4
3/8	220P-6



222P Adapter

1 Pipe thread	2 Pipe thread	C Hex	Part number
1/8	1/8	9/16	222P-2-2
1/4	1/8	3/4	222P-4-2
1/4	1/4	3/4	222P-4-4
3/8	1/8	7/8	222P-6-2
3/8	1/4	7/8	222P-6-4
3/8	3/8	7/8	222P-6-6
1/2	1/4	1	222P-8-4
1/2	3/8	1-1/16	222P-8-6
1/2	1/2	1-1/16	222P-8-8
3/4	3/8	1-3/8	222P-12-6
3/4	1/2	1-3/8	222P-12-8
3/4	3/4	1-3/8	222P-12-12



216P Hex Nipple

Pipe thread	C Hex	Part number
1/8	7/16	216P-2
1/4	9/16	216P-4
3/8	11/16	216P-6
1/2	7/8	216P-8
3/4	1-1/16	216P-12



1200P-2200P 90° Union Elbow

Pipe thread	Part number
1/8	1200P-2-2
1/8	2200P-2-2
1/4	1200P-4-4
1/4	2200P-4-4
3/8	1200P-6-6
3/8	2200P-6-6
1/2	2200P-8-8



218P Hex-Head Plug

Pipe thread	C Hex	Part number
1/8	7/16	218P-2
1/4	9/16	218P-4
3/8	11/16	218P-6
1/2	7/8	218P-8
3/4	1-1/16	218P-12



1202P-2202P 90° Street Elbow

1 Pipe thread	2 Pipe thread	Part number
1/8	1/8	1202P-2-2
1/8	1/8	2202P-2-2
1/8	1/8	2202PA-2-2*
1/4	1/8	2202P-4-2
1/4	1/4	1202P-4-4
1/4	1/4	2202P-4-4
1/4	1/4	2202PA-4-4*
1/4	3/8	2202P-4-6
3/8	1/4	1202P-6-4
3/8	3/8	1202P-6-6
3/8	3/8	2202P-6-6
3/8	3/8	2202PA-6-6*



219P Countersunk Hex-Head Plug

Pipe thread	C Hex	Part number
1/8	3/16	219P-2
1/4	1/4	219P-4
3/8	5/16	219P-6
1/2	3/8	219P-8
3/4	9/16	219P-12



Most popular.

*Meets SAE Dimensions

G

Accessories

Ball / Plug Valves

Hose & Fittings

Integrated Fittings

Misc. Accessories

Quick Couplings

Tubing & Fittings



Parker Pneumatic

**Accessories
 Pipe Fittings**

1203P-2203P Union Tee



Pipe thread	Part number
1/8	1203P-2
1/8	2203P-2
1/4	1203P-4
1/4	2203P-4
3/8	2203P-6
1/2	1203P-8
1/2	2203P-8
3/4	2203P-12

1201P-2201P 45° Female Elbow



1201P



2201P

Pipe thread	Part number
1/8	2201P-2-2
1/2	1201P-8-8

1204P Male Elbow



Pipe thread	Part number
1/8	1204P-2
1/4	1204P-4
3/8	1204P-6
1/2	1204P-8

2205P Cross



Pipe thread	Part number
1/8	2205P-2
1/4	2205P-4
3/8	2205P-6
1/2	2205P-8
3/4	2205P-12

2214P 45° Street Elbow



Pipe thread	Part number
1/8	2214P-2-2
1/4	2214P-4-4
3/8	2214P-6-6
1/2	2214P-8-8

2224P Male Branch Tee



Pipe thread	Part number
1/8	2224P-2
1/4	2224P-4
3/8	2224P-6
1/2	2224P-8
3/4	2224P-12

2225P Street Tee



Pipe thread	Part number
1/8	2225P-2
1/4	2225P-4
3/8	2225P-6
1/2	2225P-8
3/4	2225P-12

Most popular.

G	Accessories
	Ball / Plug Valves
Hose & Fittings	
Integrated Fittings	
Misc. Accessories	
Quick Couplings	
Tubing & Fittings	



Parker Pneumatic

Accessories
Metric Adapters BSP

DD44 Pipe 90° Elbow BSPP



BSPP	C Hex	Part number
1/8	14	1/8DD44B
1/4	17	1/4DD44B
3/8	22	3/8DD44B
1/2	27	1/2DD44B

KMMOO4 Pipe Cross BSPP



BSPP	C Hex	Part number
1/8	14	1/8KMMOO4B
1/4	17	1/4KMMOO4B
3/8	22	3/8KMMOO4B
1/2	27	1/2KMMOO4B

FF44 Pipe Nipples BSPP



BSPP	C Hex	Part number
1/8	14	1/8FF44B
1/4	17	1/4FF44B
3/8	22	3/8FF44B
1/2	27	1/2FF44B

MMO444 Pipe Tee BSPP



BSPP	C Hex	Part number
1/8	14	1/8MMO444B
1/4	17	1/4MMO444B
3/8	22	3/8MMO444B
1/2	27	1/2MMO444B
3/4	32	3/4MMO444B
1	40	1MMO444B

FHG4 Adapter Male NPTF BSPP



BSPP 1	NPTF 2	C Hex	Part number
1/8	1/8	0.562	1/8FHG4-B
1/4	1/4	0.750	1/4FHG4-B
3/8	3/8	0.875	3/8FHG4-B
1/2	1/2	1.062	1/2FHG4-B

WGG44 Bulkhead Female Union BSPP



BSPP	Straight thread	C Hex	Part number
1/8	M16x1.5	19	1/8WGG44B
1/4	M20x1.5	24	1/4WGG44B
3/8	M23x1.5	27	3/8WGG44B
1/2	M27x1.5	32	1/2WGG44B
3/4	M34x1.5	41	3/4WGG44B
1	M45x2	55	1WGG44B

GG44 Pipe Connector BSPP



BSPP	C Hex	Part number
1/8	14	1/8GG44B
1/4	17	1/4GG44B
3/8	22	3/8GG44B
1/2	27	1/2GG44B
3/4	32	3/4GG44B
1	41	1GG44B

Most popular.

G

Accessories

Ball / Plug Valves

Hose & Fittings

Integrated Fittings

Misc. Accessories

Quick Couplings

Tubing & Fittings



G

Accessories